



**C-69 South Zarzamora Street Sewer  
Upsize and Relief Project  
Solicitation Number: CO-00426  
Job No.: 18-4506**

**ADDENDUM 1  
April 21, 2021**

To Bidder of Record:

This addendum, applicable to work referenced above, is an amendment to the bid proposal, plans and specifications and as such will be a part of and included in the Contract Documents. Acknowledge receipt of this addendum by entering the Addendum number and issue date on the space provided in submitted copies of the bid proposal.

<b>RESPONSE TO QUESTIONS</b>
------------------------------

1. Question: Does the UPRR Agreement permit use of interlocking joint steel casing in accordance with AREMA Revision 2017?  
*Response: See plan sheet 03 for casing detail notes. Interlocking casing will not be allowed.*
2. Question: There is a note on plan page 28 that says to see plan page 40 for the detail on SSMH A-1 but when you go to plan page 40 shows a detail for SSMH D-1. SSMH A-1 isn't a drop manhole so the detail we are being sent to is incorrect.  
*Response: Detail for SSMH A-1 is on sheet 42.*
3. Question: There is a callout on plan page 34 that shows SSMH D-1 and says for quantity see sheet 38. When you go to sheet 38 the manholes called out are SSMH A-4 and SSMH B-1, SSMH D-1 isn't shown anywhere on this page.  
*Response: Quantity for SSMH D-1 is on sheet 40.*
4. Question: On plan page 38 the callout at SSMH A-4 says to see sheet 27 for quantities but when you got to sheet 27, this is regarding the abandonment and lateral reconnection plan for Line 'G' and it is referencing proposed SSMH A-1 and not SSMH A-4 like the callout on sheet 38 mentions.  
*Response: SSMH A-4 on sheet 38 should be renamed SSMH A-3. Quantity for SSMH A-3 is on sheet 29.*
5. Question: I'm also a little confused on the callout on sheet 32 regarding Line 'C' and Exist. SSMH 20217, it says to go to sheet 37 for quantities, but sheet 37 is still Line 'A' and there isn't anything on that sheet regarding Exist. 20217. It looks like the quantities for this are on sheet 39.  
*Response: Quantity for Line C is on sheet 39.*
6. Question: Sheet 40 references sheet 32 for quantities regarding SSMH A-10, this is an incorrect reference, I believe this should reference sheet 34.  
*Response: Quantity for SSMH A-10 is on sheet 34.*
7. Question: The detail on the Polymer Concrete Structure SSMH A-1 on sheet 42 shows the pipe diameter in the drawing as 42" and in the Openings at 36". Sheet 28 also shows the pipe at 36", can you please confirm the pipe openings on this structure are to be 36"? Also, the detail on sheet 42 shows the measurements and dimensions for the structure but there isn't a detail on how this connection is to be made.  
*Response: The detail on sheet 42 shows the pipe diameter as 36" and the hole size opening as 42" per chart shown on sheet 42. The contractor will be responsible to coordinate with the polymer concrete manhole supplier to provide submittals and shop drawings to be approved by SAWS and consultant before ordering the manholes. The opening at the manhole needs to be large enough to place a 36" FRP pipe into the box and maintain the box watertight. The connection needs to be watertight and conform to the supplier requirements.*

**CHANGES TO THE SPECIFICATIONS**

1. N/A.

**CHANGES TO PLANS**

1. Replace Plan & Profile sheets 28 thru 40 with attached Plan & Profile sheets 28 thru 40. This corrects referencing sheet numbers.

**CLARIFICATIONS**

1. N/A.

**END OF ADDENDUM**

This Addendum, including these two (2) pages, is fifteen (15) pages with attachments in its entirety.

Attachments:

Plan & Profile Sheets 28 thru 40.

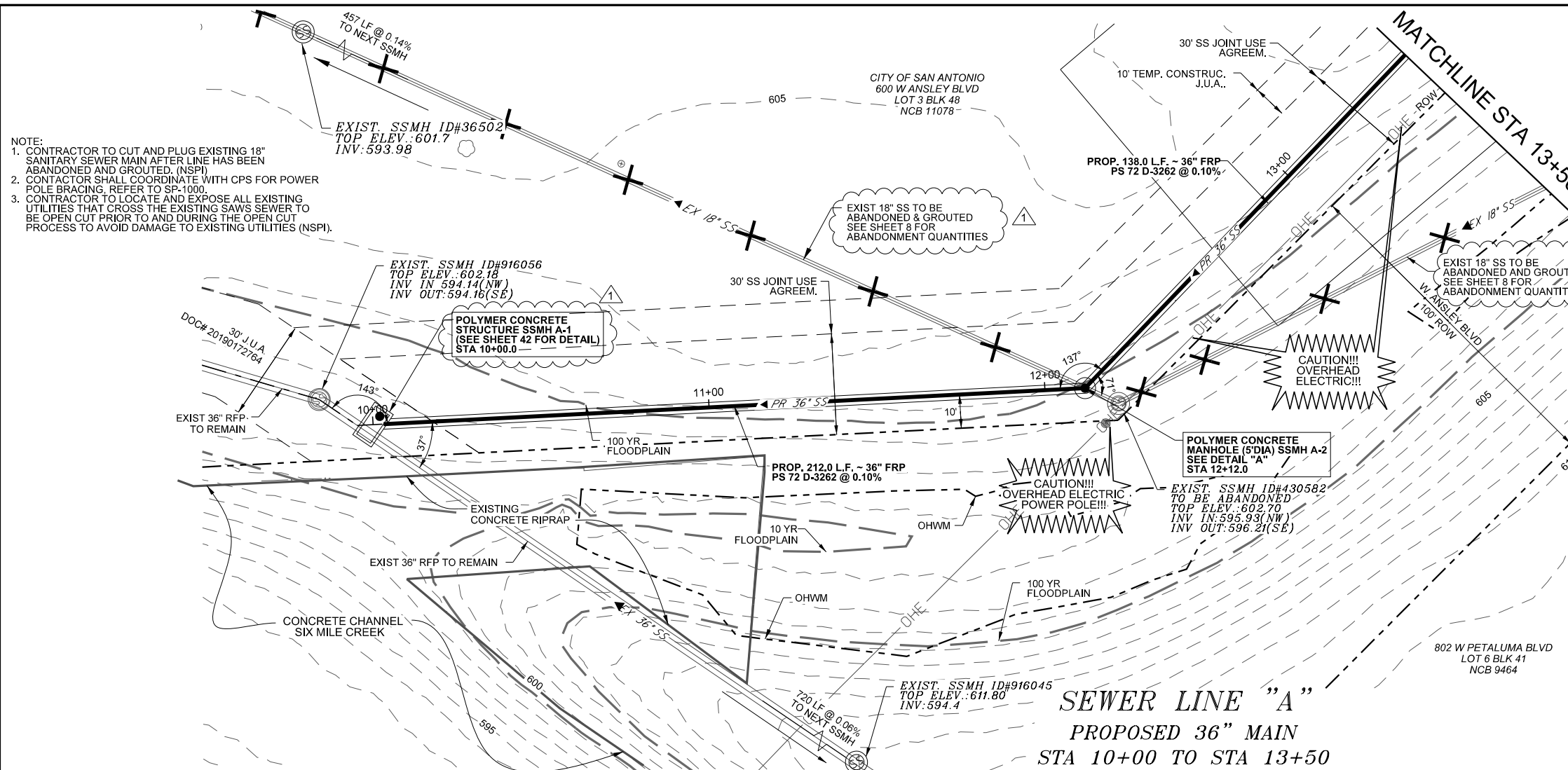


  
Carl Bain, P.E.

04-21-2021

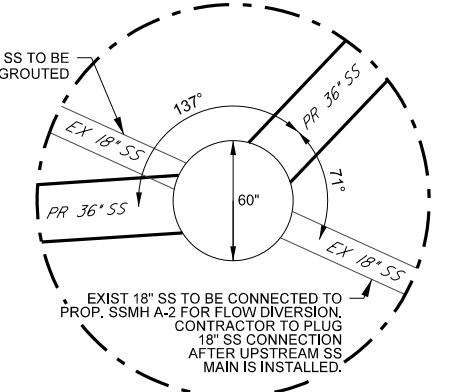
Bain Medina Bain, INC.  
*Texas Registered Engineering Firm F-1712*  
7073 San Pedro Ave.  
San Antonio, Texas 78216  
210-494-7223

4/21/2021  
4:40 AM  
\\work\c-1475\_saws\_2017\_ssorp (p-00045)\_c69\_s\_zarzaromor\0\SAMS\_Sheets\c69\_swr08\_PPI.dgn

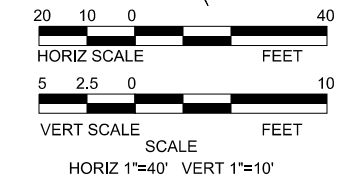


ITEM	DESCRIPTION	QUANT.	UNIT
515.1	TOP SOIL (4") (COSA SPEC)	42	CY
520.1	HYDROMULCHING (COSA SPEC)	1560	SY
550	TRENCH EXCAVATION SAFETY PROTECTION	350	LF
849	SANITARY SEWER ACCEPTANCE TESTING (>18")	350	LF
850	POLYMER CONCRETE SANITARY SEWER STRUCTURE ("SSMH A-1")	1	EA
850	POLYMER CONCRETE MANHOLE (5' DIA)	1	EA
850	POLYMER CONCRETE EXTRA DEPTH MANHOLE (5' DIA) (> 6')	5	VF
857	36" FRP (ASTM D-3262) (PS 72) SANITARY SEWER LINE (6'-10")	350	LF
866	SEWER MAIN POST-TELEVISION INSPECTION (=>27")	350	LF

NOTE:  
 1. CONTRACTOR TO CUT AND PLUG EXISTING 18" SANITARY SEWER MAIN AFTER LINE HAS BEEN ABANDONED AND GROUDED. (NSPI)  
 2. CONTRACTOR SHALL COORDINATE WITH CPS FOR POWER POLE BRACING, REFER TO SP-1000.  
 3. CONTRACTOR TO LOCATE AND EXPOSE ALL EXISTING UTILITIES THAT CROSS THE EXISTING SANITARY SEWER TO BE OPEN CUT PRIOR TO AND DURING THE OPEN CUT PROCESS TO AVOID DAMAGE TO EXISTING UTILITIES (NSPI).



**SEWER LINE "A"**  
**PROPOSED 36" MAIN**  
**STA 10+00 TO STA 13+50**

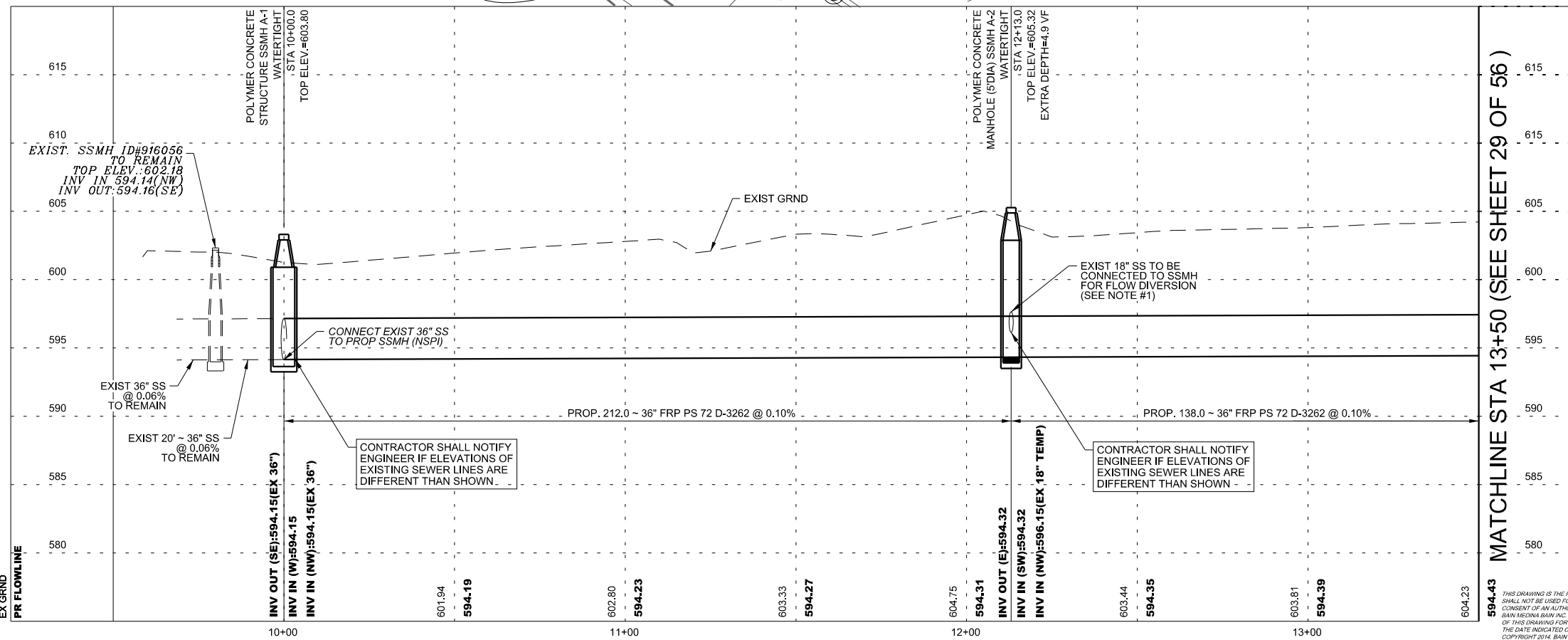


**LEGEND**

EXISTING WATER METER	
EXISTING FIRE HYDRANT	
EXISTING POWER POLE	
EXISTING WATER VALVE	
EXISTING MAIL BOX	
EXISTING TELECOMM BOX	
EXISTING FLOW ARROW	
PROP WATER MAIN	
EXIST WATER MAIN	
PROP SANITARY SEWER	
EXIST SANITARY SEWER	
ABANDON SEWER LINE	
PROPOSED SEWER MANHOLE	
EXIST SEWER MANHOLE	
PROPOSED SEWER LATERAL AND CLEAN-OUT	
GAS MAIN	
OVERHEAD ELECTRIC	
UNDERGROUND ELECTRIC	
UNDERGROUND TELEPHONE	
PROPOSED FLOW ARROWS	
TREE	
SIGN	
GUY ANCHOR	
BOREHOLE	
CONTROL POINT	
FLOWABLE FILL/CONC	
CUT & REPLACE ASPHALT/CONCRETE	
MILL & OVERLAY	
CAUTION UTILITY CROSSING	



The seal appearing on this document was authorized by  
**CARL BAIN**  
 P.E. 56996 ON  
 4/21/2021



REV.	DATE	DESCRIPTION	BY
1	4/21/2021	ADDENDUM #01	CB

**BAIN MEDINA BAIN, INC.**  
**ENGINEERS & SURVEYORS**  
 7878 F-001712  
 7073 San Pedro, San Antonio, Texas, 78216  
 Phone: 210-494-7223 Fax: 210-490-5120 WWW.BMBI.COM

C-69 SOUTH ZARZAMORA  
**SANITARY SEWER LINE "A"**  
**PLAN & PROFILE**

DEVELOPER: \_\_\_\_\_  
 CONT. \_\_\_\_\_ BUDGET PROJ. \_\_\_\_\_

SUBMITTED \_\_\_\_\_  
 APPROVED \_\_\_\_\_

MAP No. \_\_\_\_\_ SHEET 28 OF 56  
 SECT. No. \_\_\_\_\_ 100% DESIGN  
 DR. MG CK. CC/CB JOB No. 18-4506

THIS DRAWING IS THE PROPERTY OF BAIN MEDINA BAIN, INC. AND SHALL NOT BE USED FOR ANY PURPOSE WITHOUT THE WRITTEN CONSENT OF AN AUTHORIZED AGENT OF BAIN MEDINA BAIN, INC. BAIN MEDINA BAIN, INC. ACCEPTS NO RESPONSIBILITY FOR THE USE OF THIS DRAWING FOR ANY PURPOSE AFTER SIX MONTHS FROM THE DATE INDICATED ON THE DRAWING. ALL RIGHTS RESERVED. COPYRIGHT 2014, BAIN MEDINA BAIN, INC. ©

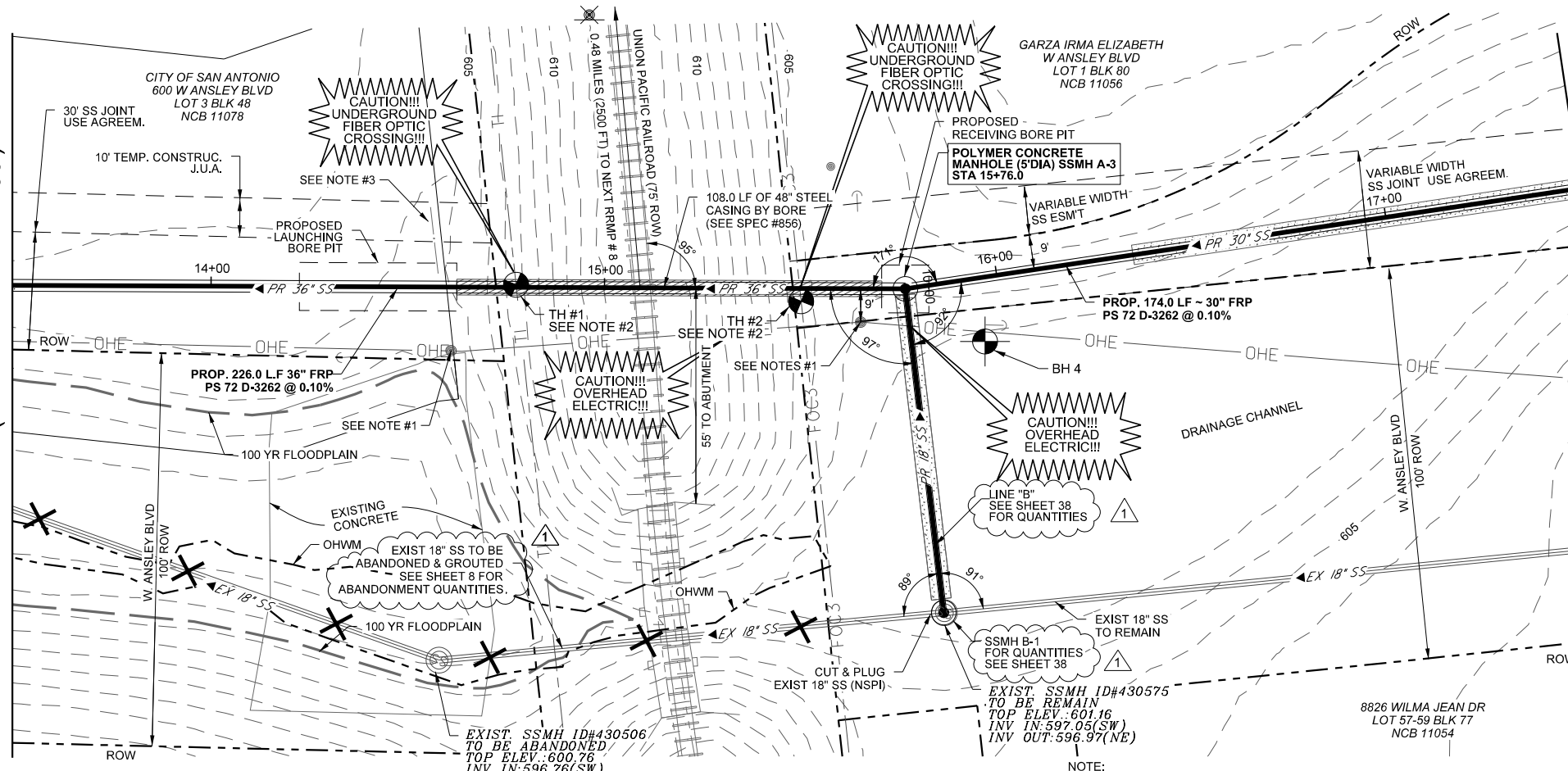
4/21/2021

4/21/2021

W:\Work\C-1475\_SAW5\_2017\_SSORP (P5-0004E)\_C69\_S\_ZarZamor@SAMS\_Sheets\C69\_SWR09\_PP2.dgn

MATCHLINE STA 13+50 (SEE SHEET 28 OF 56)

MATCHLINE STA 17+50 (SEE SHEET 30 OF 56)



**UNION PACIFIC RAIL ROAD & RAIL PROS NOTES:**  
 CONTACTOR SHALL COORDINATE WITH UNION PACIFIC RAILROAD & RAIL PROS TO CERTIFY THAT ALL REQUIREMENTS & PROCEDURES ARE MET BEFORE STARTING CONSTRUCTION WITHIN RAILROAD ROW. (SEE SHEET #03 FOR MORE DETAILS)

**SEWER LINE "A"**  
**PROPOSED 36" & 30" MAIN**  
**STA 13+50 TO STA 17+50**

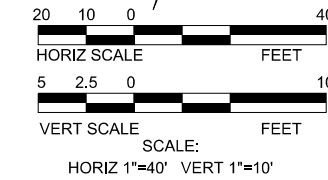
- NOTE:  
 1. CONTACTOR SHALL COORDINATE WITH CPS FOR POWER POLE BRACING. REFER TO SP-1000.  
 2. CONTRACTOR TO LOCATE AND EXPOSE ALL EXISTING UTILITIES THAT CROSS THE PROPOSED SANITARY SEWER TO BE OPEN CUT OR BORED PRIOR TO AND DURING THE CONSTRUCTION PROCESS TO AVOID DAMAGE TO EXISTING UTILITIES (NSPI).  
 3. CONTRACTOR TO CONTROL RAIN WATER FROM DRAINING INTO THE PIT.

ITEM	DESCRIPTION	QUANT.	UNIT
413	FLOWABLE FILL	32	CY
515.1	TOP SOIL (4") (COSA SPEC)	36	CY
520.1	HYDROMULCHING (COSA SPEC)	1300	SY
550	TRENCH EXCAVATION SAFETY PROTECTION	292	LF
849	SANITARY SEWER ACCEPTANCE TESTING (>18")	400	LF
850	POLYMER CONCRETE MANHOLE (5' DIA)	1	EA
850	POLYMER CONCRETE EXTRA DEPTH MANHOLE (5' DIA) (>6')	5.2	VF
856.1	JACKING OR BORING PIPE (48")	108	LF
856.2	CARRIER PIPE FOR JACKING OR BORING (36" FRP)	108	LF
856.3	STEEL CASING (48")	108	LF
857	30" FRP (ASTM D-3262) (PS 72) SANITARY SEWER LINE (6'-10")	174	LF
857	36" FRP (ASTM D-3262) (PS 72) SANITARY SEWER LINE (6'-10")	118	LF
866	SEWER MAIN POST-TELEVISION INSPECTION (>27")	400	LF

POTHOLE	UTILITY	X	Y	TOP OF PIPE	DEPTH
TH 1	3" PVC SPRINT	2,120,358.98	13,672,233.99	604.68	4.90'
TH 2	2" LEVEL 3 FOC	2,120,288.54	13,672,216.36	603.70	4.48'

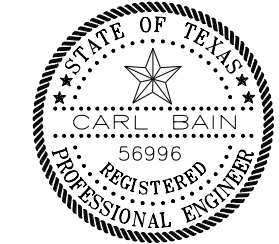
  

BOREHOLE	SOIL	X	Y	DEPTH
BH 4	FAT CLAY	2,120,240.87	13,672,212.18	20'



**LEGEND**

- EXISTING WATER METER
- EXISTING FIRE HYDRANT
- EXISTING POWER POLE
- EXISTING WATER VALVE
- EXISTING MAIL BOX
- EXISTING TELECOMM BOX
- EXISTING FLOW ARROW
- PROP WATER MAIN
- EXIST WATER MAIN
- PROP SANITARY SEWER
- EXIST SANITARY SEWER
- ABANDON SEWER LINE
- PROPOSED SEWER MANHOLE
- EXIST SEWER MANHOLE
- PROPOSED SEWER LATERAL AND CLEAN-OUT
- GAS MAIN
- OVERHEAD ELECTRIC
- UNDERGROUND ELECTRIC
- UNDERGROUND TELEPHONE
- PROPOSED FLOW ARROWS
- TREE
- SIGN
- GUY ANCHOR
- BOREHOLE
- CONTROL POINT
- FLOWABLE FILL/CONC
- CUT & REPLACE ASPHALT/CONCRETE
- MILL & OVERLAY
- CAUTION UTILITY CROSSING



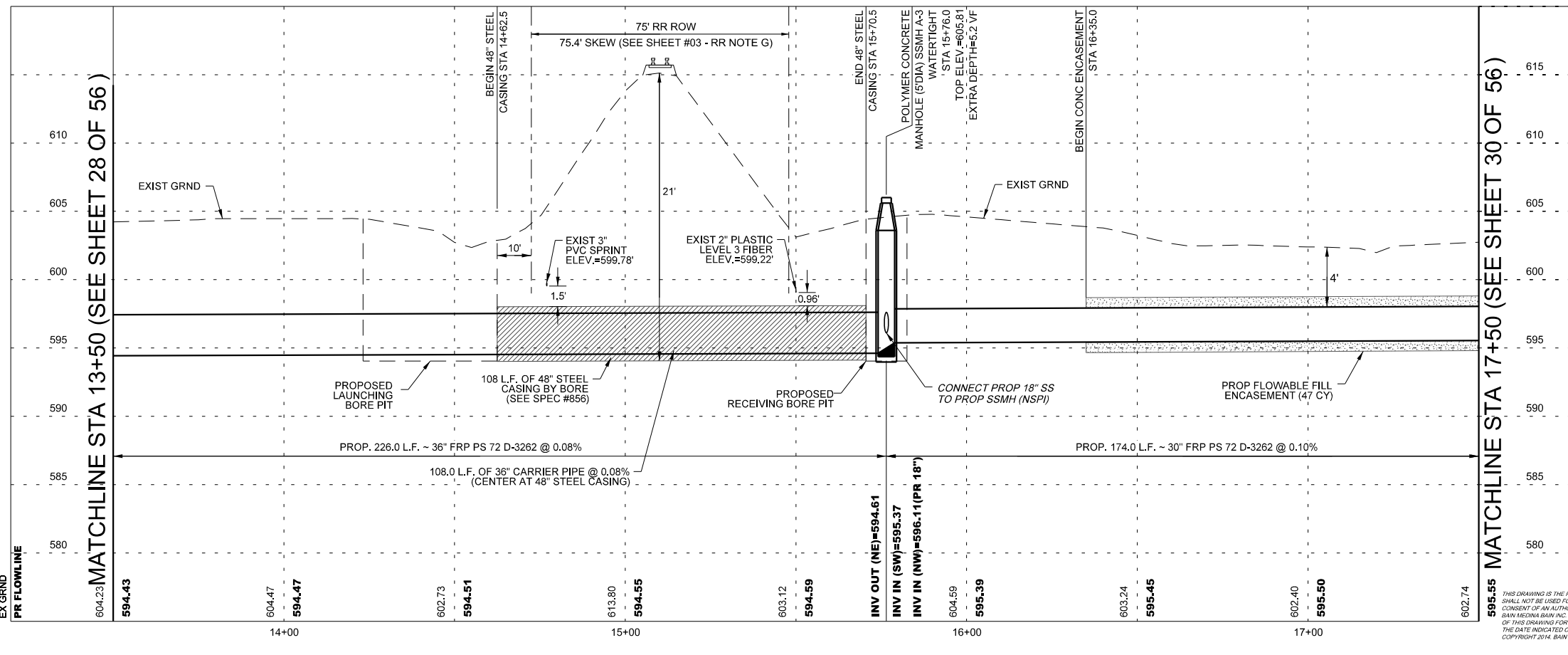
The seal appearing on this document was authorized by  
**CARL BAIN**  
 P.E. 56996 ON  
 4/21/2021

REV.	DATE	DESCRIPTION	BY
1	4/21/2021	ADDENDUM #01	CB

**BAIN MEDINA BAIN, INC.**  
 ENGINEERS & SURVEYORS  
 7073 San Pedro, San Antonio, Texas, 78216  
 Phone: 210-494-7223 Fax: 210-490-5120 WWW.BMBA.COM

C-69 SOUTH ZARZAMORA  
**SANITARY SEWER LINE "A"**  
**PLAN & PROFILE**

DEVELOPER:	BUDGET PROJ.	SHEET	29
CONT.		OF	56
SUBMITTED		100% DESIGN	
APPROVED		JOB No.	18-4506
MAP No.			
SECT. No.			
DR. MG	CK. CC/CB		



MATCHLINE STA 17+50 (SEE SHEET 30 OF 56)

MATCHLINE STA 13+50 (SEE SHEET 28 OF 56)

THIS DRAWING IS THE PROPERTY OF BAIN MEDINA BAIN, INC. AND SHALL NOT BE USED FOR ANY PURPOSE WITHOUT THE WRITTEN CONSENT OF AN AUTHORIZED AGENT OF BAIN MEDINA BAIN, INC. BAIN MEDINA BAIN, INC. ACCEPTS NO RESPONSIBILITY FOR THE USE OF THIS DRAWING FOR ANY PURPOSE AFTER SIX MONTHS FROM THE DATE INDICATED ON THE DRAWING. ALL RIGHTS RESERVED. COPYRIGHT 2014, BAIN MEDINA BAIN, INC. ©

4/21/2021

W:\Work\C-1475\_SAW5\_2017\_SSDRP (P5-0004E)\_C69\_S\_ZarZamor@d\SAMS\_Sheets\C69\_SWRD\_PP3.dgn

MATCHLINE STA 17+50 (SEE SHEET 29 OF 56)

MATCHLINE STA 21+50 (SEE SHEET 31 OF 56)

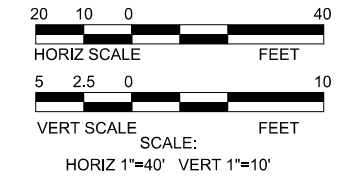
ITEM	DESCRIPTION	QUANT.	UNIT
103.1	REMOVE CONCRETE CURB (COSA SPEC)	40	LF
103.3	REMOVE CONCRETE SIDEWALKS AND DRIVEWAYS (COSA SPEC)	180	SF
103.4	REMOVE MISCELLANEOUS CONCRETE (COSA SPEC)	460	SF
203.1	TACK COAT (COSA SPEC)	22	GA
205.4	HOT MIX ASPHALTIC CONCRETE PAVEMENT, TYPE D (2" COMPACTED DEPTH) (COSA SPEC)	220	SY
206.1	ASPHALT TREATED BASE (ATB) (10" COMPACTED DEPTH) (COSA SPEC)	60	SY
208.1	SALVAGING HAULING & STOCKPILING RECLAIMABLE ASPHALTIC PAVEMENT (2" DEPTH) (COSA SPEC)	220	SY
413	FLOWABLE FILL	13	CY
500.1	CONCRETE CURB (COSA SPEC)	40	LF
502.1	CONCRETE SIDEWALKS (COSA SPEC)	20	SY
505.1	CONCRETE RIPRAP (5" THICK)(COSA SPEC)	51	SY
515.1	TOP SOIL (4") (COSA SPEC)	43	CY
520.1	HYDROMULCHING (COSA SPEC)	1760	SY
550	TRENCH EXCAVATION SAFETY PROTECTION	400	LF
849	SANITARY SEWER ACCEPTANCE TESTING (>18")	400	LF
850	POLYMER CONCRETE MANHOLE (5' DIA)	1	EA
850	POLYMER CONCRETE DROP MANHOLE (5' DIA)	1	EA
850	POLYMER CONCRETE EXTRA DEPTH MANHOLE (5' DIA) (> 6')	10.2	VF
857	30" FRP (ASTM D-3262) (PS 72) SANITARY SEWER LINE (6'-10')	50	LF
857	30" FRP (ASTM D-3262) (PS 72) SANITARY SEWER LINE (10'-14')	350	LF
866	SEWER MAIN POST-TELEVISION INSPECTION (>27")	400	LF

POTHOLE	UTILITY	X	Y	DEPTH
TH 3	2" GAS PVC	2,119,444.05	13,669,876.20	5.00'
TH 3A	2" GAS STEEL	2,119,446.10	13,669,875.70	4.51'
TH 4	2" GAS STEEL	2,119,466.59	13,669,823.68	5.26'
TH 5	16" STEEL WATER	2,119,383.64	13,669,835.38	6.15'
TH 6	16" STEEL WATER	2,119,361.83	13,669,889.95	6.27'

STREET	FROM	TO	PCI
W ANSLEY BLVD	DEDE ST	ROCKWELL BLVD	86-100
W ANSLEY BLVD	ROCKWELL BLVD	WILMA JEAN DR	51-85

**LEGEND**

- EXISTING WATER METER
- EXISTING FIRE HYDRANT
- EXISTING POWER POLE
- EXISTING WATER VALVE
- EXISTING MAIL BOX
- EXISTING TELECOMM BOX
- EXISTING FLOW ARROW
- PROP WATER MAIN
- EXIST WATER MAIN
- PROP SANITARY SEWER
- EXIST SANITARY SEWER
- ABANDON SEWER LINE
- PROPOSED SEWER MANHOLE
- EXIST SEWER MANHOLE
- PROPOSED SEWER LATERAL AND CLEAN-OUT
- GAS MAIN
- OVERHEAD ELECTRIC
- UNDERGROUND ELECTRIC
- UNDERGROUND TELEPHONE
- PROPOSED FLOW ARROWS
- TREE
- SIGN
- GUY ANCHOR
- BORHOLE
- CONTROL POINT
- FLOWABLE FILL/CONC
- CUT & REPLACE ASPHALT/CONCRETE
- MILL & OVERLAY
- CAUTION UTILITY CROSSING



The seal appearing on this document was authorized by  
**CARL BAIN**  
 P.E. 56996 ON  
 4/21/2021

REV.	DATE	DESCRIPTION	BY
1	4/21/2021	ADDENDUM #01	CB

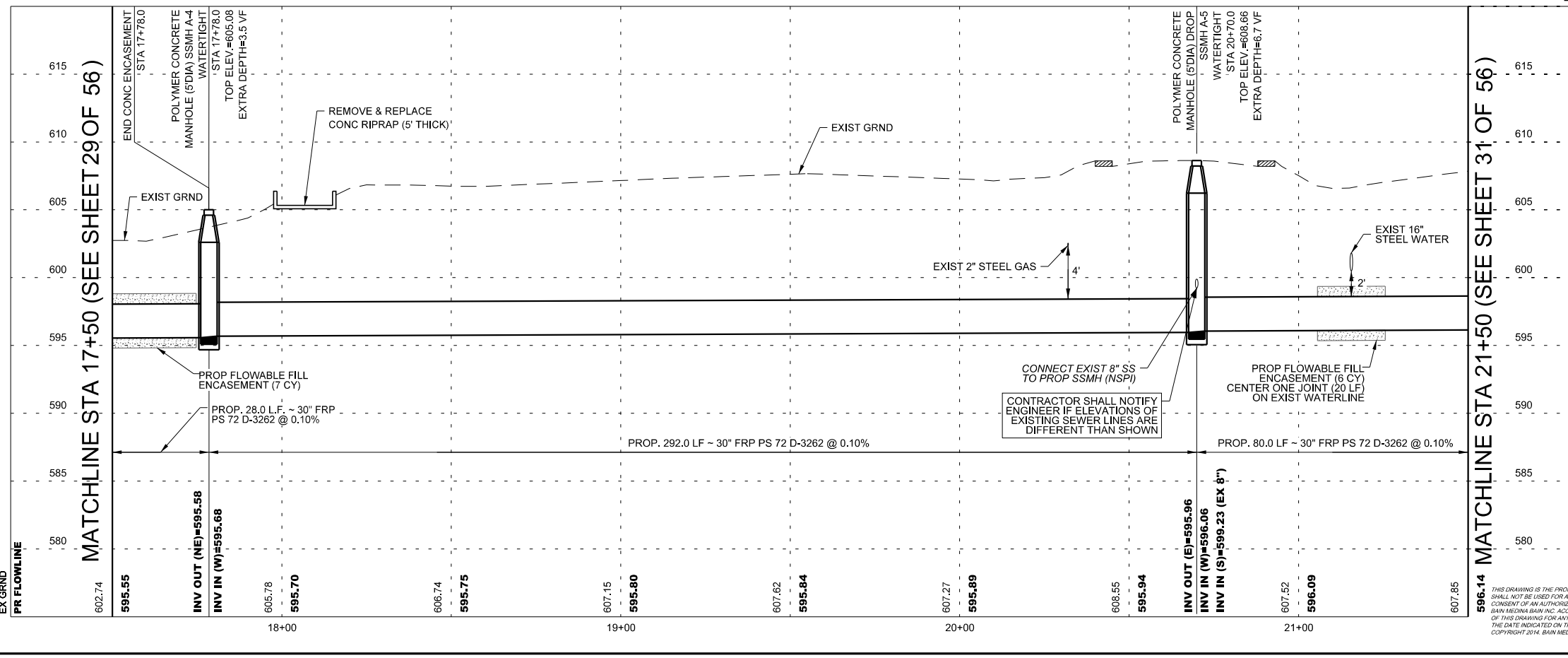
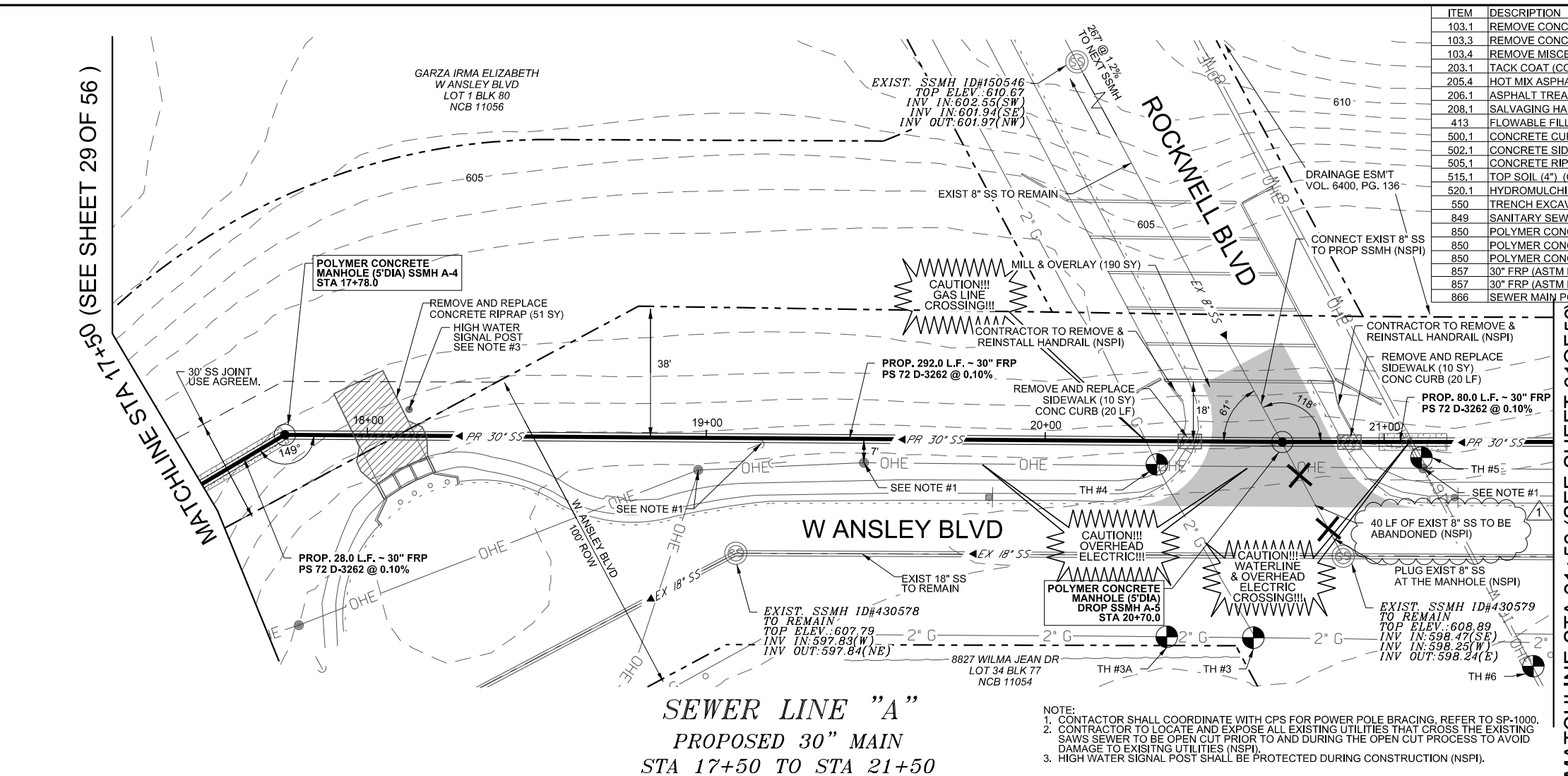
**BAIN MEDINA BAIN, INC.**  
 ENGINEERS & SURVEYORS  
 7875 R-001712  
 7073 San Pedro, San Antonio, Texas, 78216  
 Phone: 210-494-7223 Fax: 210-490-5120 WWW.BMBI.COM

**C-69 SOUTH ZARZAMORA**  
**SANITARY SEWER LINE "A"**  
**PLAN & PROFILE**

DEVELOPER: \_\_\_\_\_  
 CONT. BUDGET PROJ. \_\_\_\_\_

SUBMITTED \_\_\_\_\_  
 APPROVED \_\_\_\_\_

MAP No. \_\_\_\_\_ SHEET 30 OF 56  
 SECT. No. \_\_\_\_\_ 100% DESIGN  
 DR. MG CK. CC/CB JOB No. 18-4506

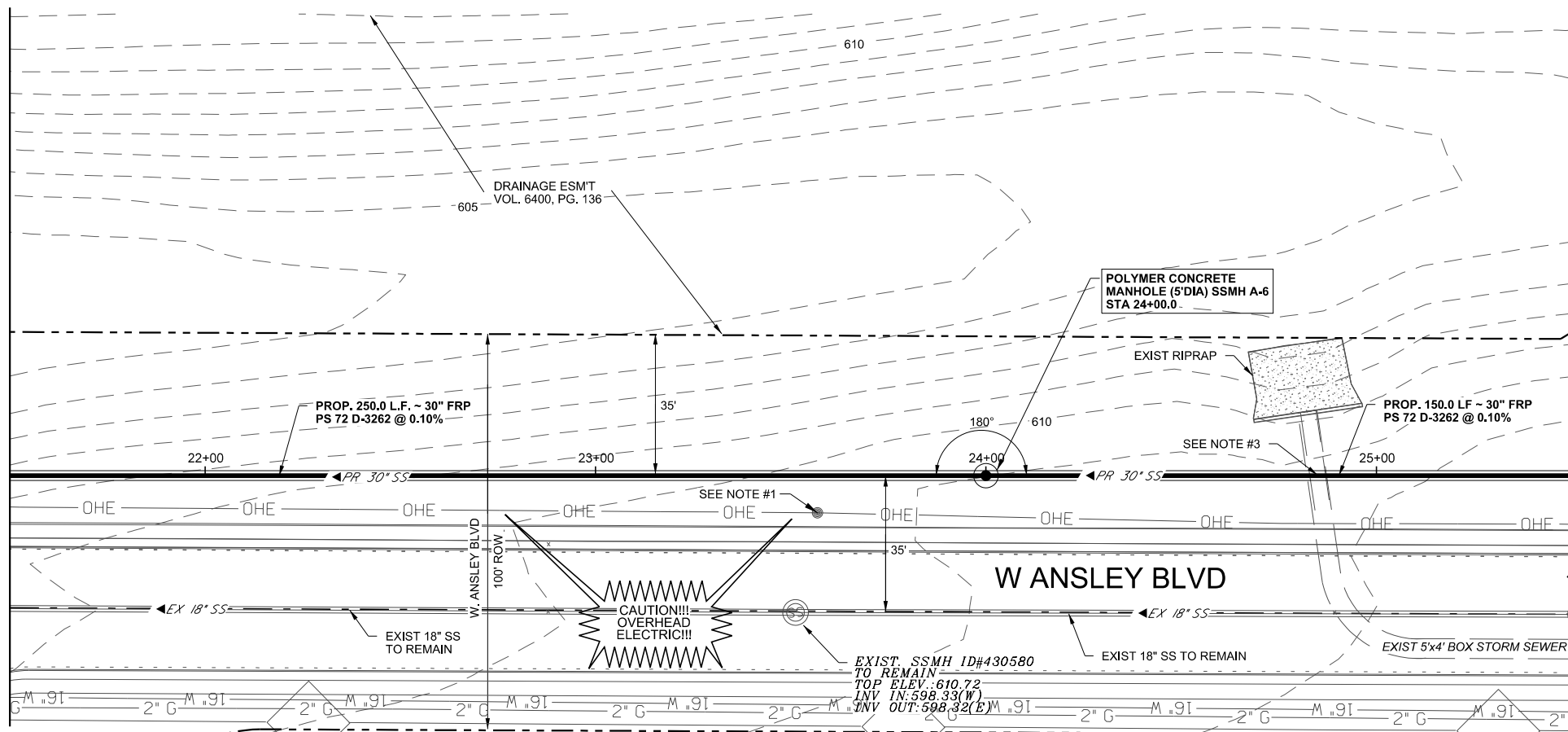


THIS DRAWING IS THE PROPERTY OF BAIN MEDINA BAIN, INC. AND SHALL NOT BE USED FOR ANY PURPOSE WITHOUT THE WRITTEN CONSENT OF AN AUTHORIZED AGENT OF BAIN MEDINA BAIN, INC. BAIN MEDINA BAIN, INC. ACCEPTS NO RESPONSIBILITY FOR THE USE OF THIS DRAWING FOR ANY PURPOSE AFTER SIX MONTHS FROM THE DATE INDICATED ON THE DRAWING. ALL RIGHTS RESERVED. COPYRIGHT 2014, BAIN MEDINA BAIN, INC. ©

ITEM	DESCRIPTION	QUANT.	UNIT
515.1	TOP SOIL (4") (COSA SPEC)	48	CY
520.1	HYDROMULCHING (COSA SPEC)	1780	SY
550	TRENCH EXCAVATION SAFETY PROTECTION	400	LF
849	SANITARY SEWER ACCEPTANCE TESTING (>18")	400	LF
850	POLYMER CONCRETE MANHOLE (5' DIA)	1	EA
850	POLYMER CONCRETE EXTRA DEPTH MANHOLE (5' DIA) (> 6')	9.6	VF
857	30" FRP (ASTM D-3262) (PS 72) SANITARY SEWER LINE (10'-14')	250	LF
857	30" FRP (ASTM D-3262) (PS 72) SANITARY SEWER LINE (14'-18')	150	LF
866	SEWER MAIN POST-TELEVISION INSPECTION (=>27")	400	LF

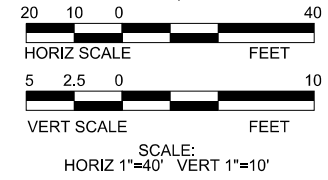
MATCHLINE STA 21+50 (SEE SHEET 30 OF 56)

MATCHLINE STA 25+50 (SEE SHEET 32 OF 56)



**SEWER LINE "A"**  
**PROPOSED 30" MAIN**  
**STA 21+50 TO STA 25+50**

- NOTE:  
1. CONTRACTOR SHALL COORDINATE WITH CPS FOR POWER POLE BRACING. REFER TO SP-1000.  
2. CONTRACTOR TO LOCATE AND EXPOSE ALL EXISTING UTILITIES THAT CROSS THE EXISTING SAWS SEWER TO BE OPEN CUT PRIOR TO AND DURING THE OPEN CUT PROCESS TO AVOID DAMAGE TO EXISTING UTILITIES (NSPI).  
3. CONTRACTOR TO SUPPORT AND PROTECT EXISTING DRAIN BOX (NSPI).

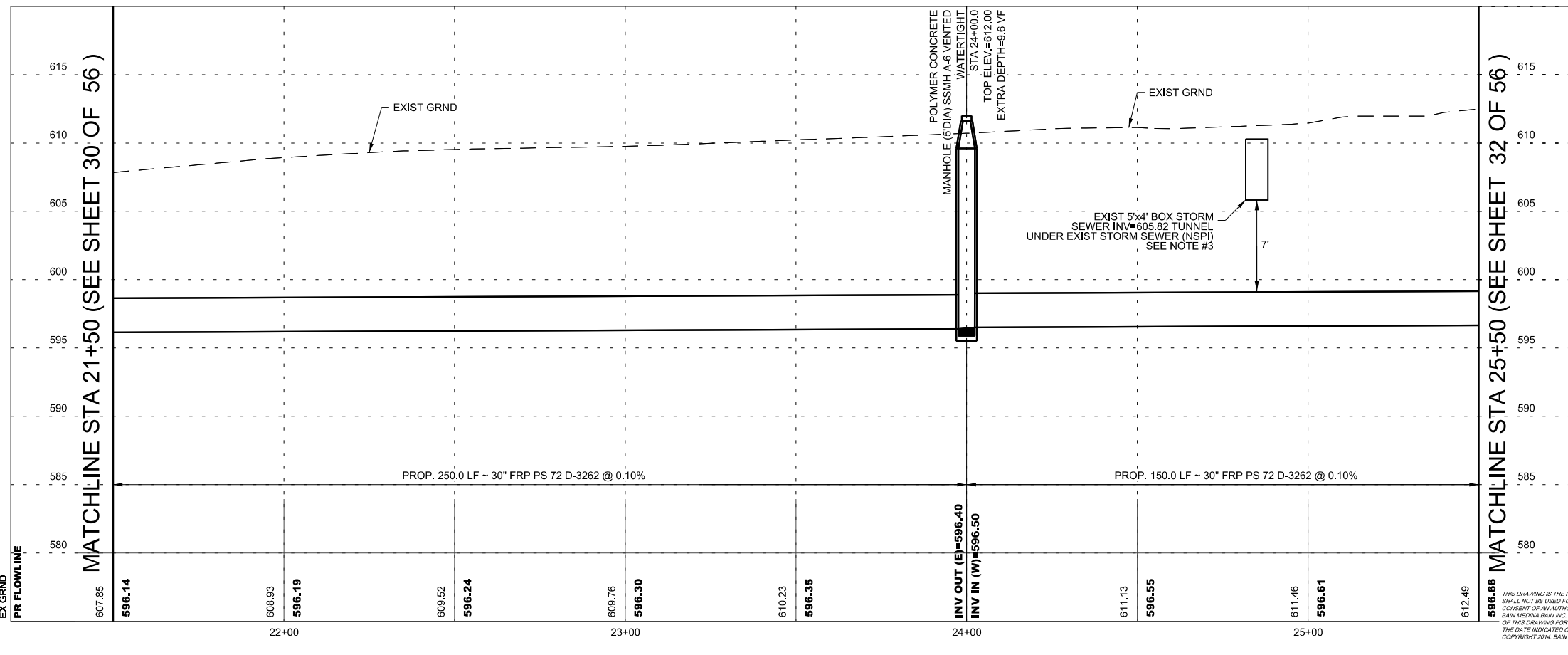


**LEGEND**

- EXISTING WATER METER
- EXISTING FIRE HYDRANT
- EXISTING POWER POLE
- EXISTING WATER VALVE
- EXISTING MAIL BOX
- EXISTING TELECOMM BOX
- EXISTING FLOW ARROW
- PROP WATER MAIN
- EXIST WATER MAIN
- PROP SANITARY SEWER
- EXIST SANITARY SEWER
- ABANDON SEWER LINE
- PROPOSED SEWER MANHOLE
- EXIST SEWER MANHOLE
- PROPOSED SEWER LATERAL AND CLEAN-OUT
- GAS MAIN
- OVERHEAD ELECTRIC
- UNDERGROUND ELECTRIC
- UNDERGROUND TELEPHONE
- PROPOSED FLOW ARROWS
- TREE
- SIGN
- GUY ANCHOR
- BOREHOLE
- CONTROL POINT
- FLOWABLE FILL/CONC
- CUT & REPLACE ASPHALT/CONCRETE
- MILL & OVERLAY
- CAUTION UTILITY CROSSING



The seal appearing on this document was authorized by  
**CARL BAIN**  
P.E. 56996 ON  
4/21/2021



REV.	DATE	DESCRIPTION	BY

**BAIN MEDINA BAIN, INC.**  
**ENGINEERS & SURVEYORS**  
7878 F-001712  
7073 San Pedro, San Antonio, Texas, 78216  
Phone: 210-494-7223 Fax: 210-490-5120 WWW.BMBL.COM

**C-69 SOUTH ZARZAMORA**  
**SANITARY SEWER LINE "A"**  
**PLAN & PROFILE**

DEVELOPER: \_\_\_\_\_  
CONT. \_\_\_\_\_ BUDGET PROJ. \_\_\_\_\_

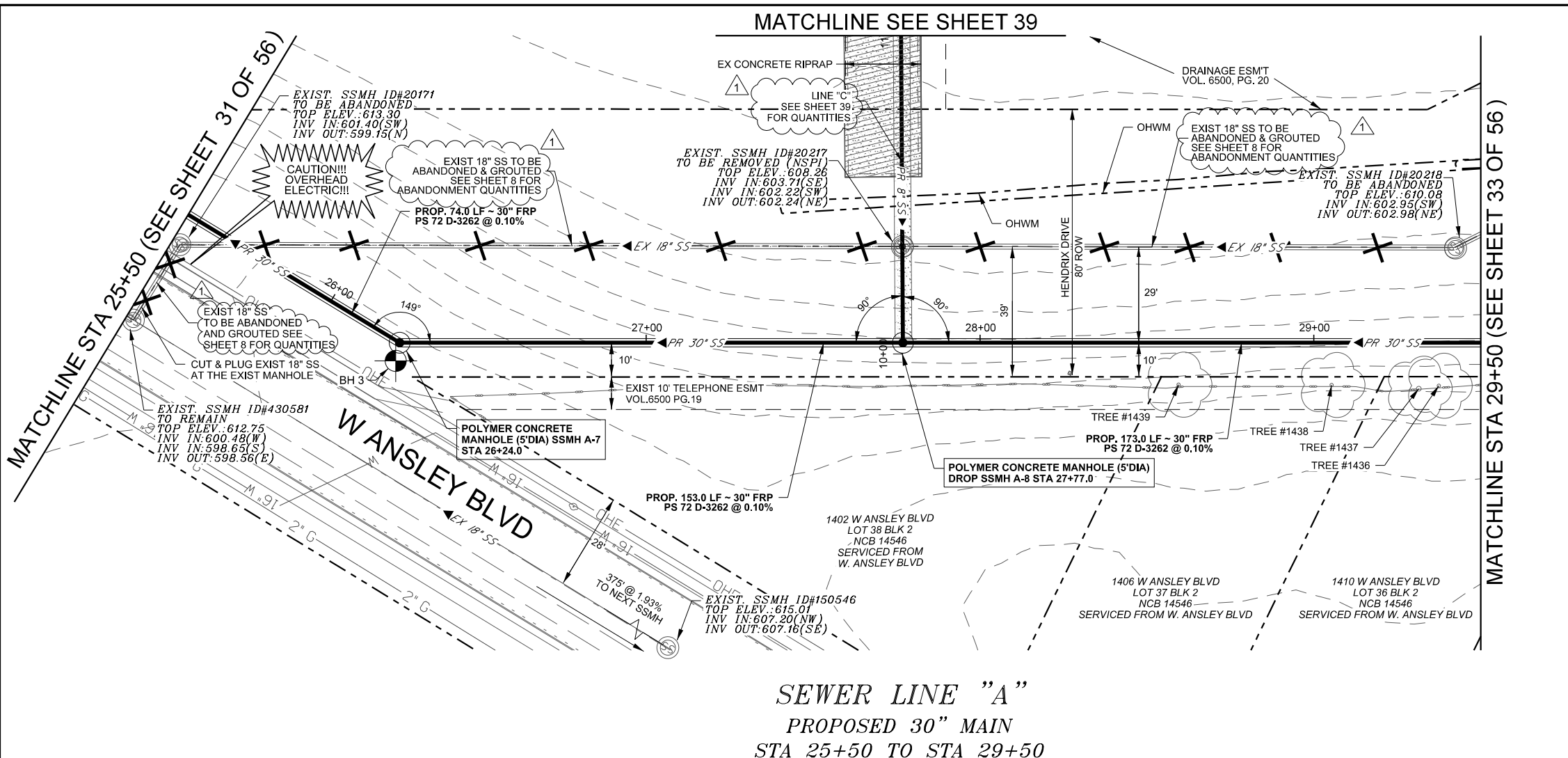
SUBMITTED \_\_\_\_\_  
APPROVED \_\_\_\_\_

MAP No. \_\_\_\_\_ SHEET 31 OF 56  
SECT. No. \_\_\_\_\_  
DR. MG CK. CC/CB JOB No. 100% DESIGN 18-4506

THIS DRAWING IS THE PROPERTY OF BAIN MEDINA BAIN, INC. AND SHALL NOT BE USED FOR ANY PURPOSE WITHOUT THE WRITTEN CONSENT OF AN AUTHORIZED AGENT OF BAIN MEDINA BAIN, INC. BAIN MEDINA BAIN, INC. ACCEPTS NO RESPONSIBILITY FOR THE USE OF THIS DRAWING FOR ANY PURPOSE AFTER SIX MONTHS FROM THE DATE INDICATED ON THE DRAWING. ALL RIGHTS RESERVED. COPYRIGHT 2014, BAIN MEDINA BAIN, INC. ©

4/21/2021 4:44 AM

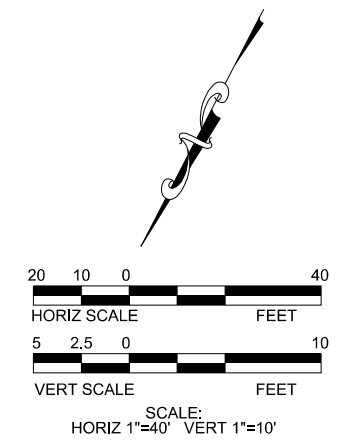
H:\Work\C-1475\_SAWP (P-0004E)\_C69\_S\_ZarZamor@d\SAWS\_Sheets\C69\_SWR2\_PFS.dgn



ITEM	DESCRIPTION	QUANT.	UNIT
515.1	TOP SOIL (4") (COSA SPEC)	48	CY
520.1	HYDROMULCHING (COSA SPEC)	1780	SY
550	TRENCH EXCAVATION SAFETY PROTECTION	400	LF
849	SANITARY SEWER ACCEPTANCE TESTING (>18")	400	LF
850	POLYMER CONCRETE MANHOLE (5' DIA)	1	EA
850	POLYMER CONCRETE DROP MANHOLE (5' DIA)	1	EA
850	POLYMER CONCRETE EXTRA DEPTH MANHOLE (5' DIA) (>6')	19	VF
857	30" FRP (ASTM D-3262) (PS 72) SANITARY SEWER LINE (10'-14')	250	LF
857	30" FRP (ASTM D-3262) (PS 72) SANITARY SEWER LINE (14'-18')	150	LF
866	SEWER MAIN POST-TELEVISION INSPECTION (≈27")	400	LF

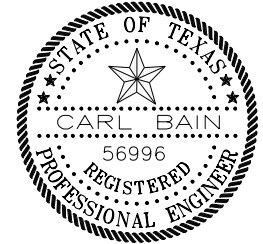
BOREHOLE	SOIL	X	Y	DEPTH
BH 3	FAT CLAY	2,119,235.61	13,672,195.48	15'

TREE #	TYPE	DIAMETER (IN)	DRIP (FT)
1436	HACKBERRY	12	20
1437	HACKBERRY	12	20
1438	HACKBERRY	9	20
1439	HACKBERRY	13	20

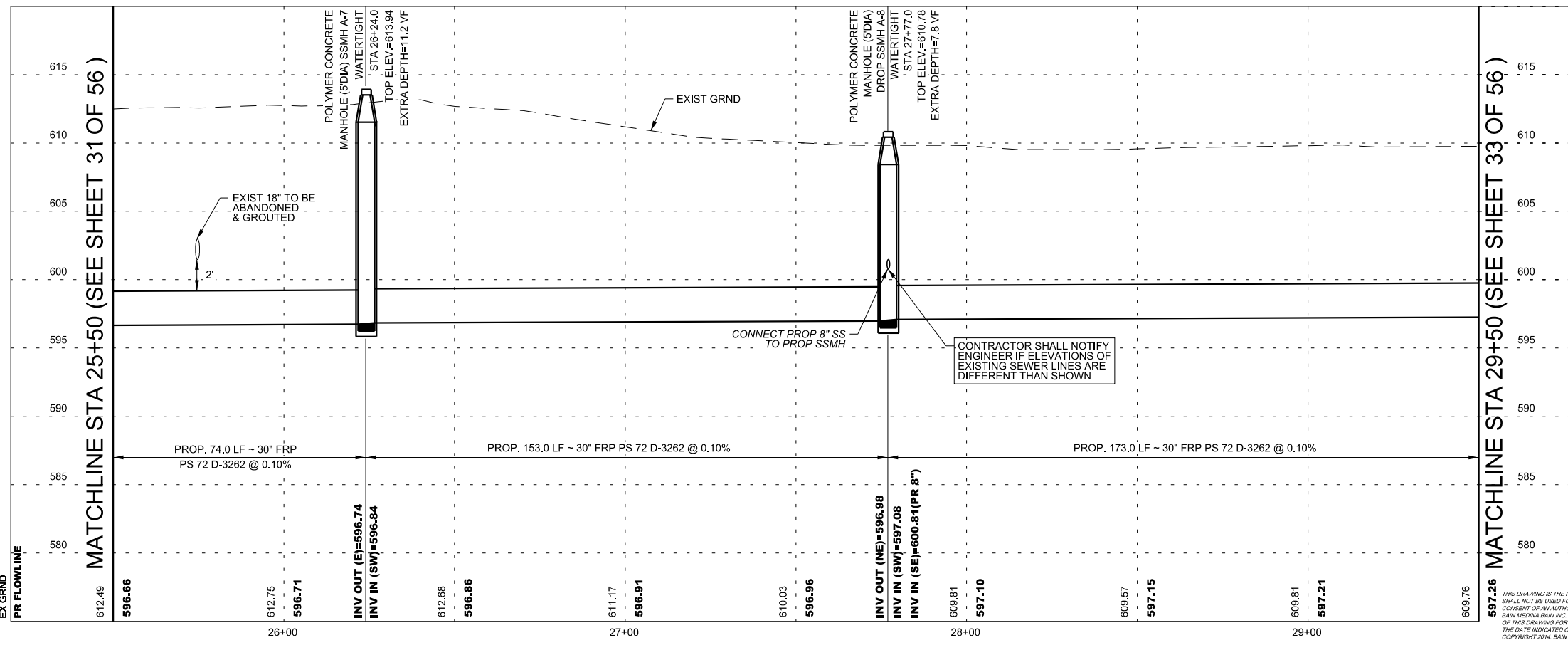


**LEGEND**

- EXISTING WATER METER
- EXISTING FIRE HYDRANT
- EXISTING POWER POLE
- EXISTING WATER VALVE
- EXISTING MAIL BOX
- EXISTING TELECOMM BOX
- EXISTING FLOW ARROW
- PROP WATER MAIN
- EXIST WATER MAIN
- EXIST SANITARY SEWER
- PROP SANITARY SEWER
- ABANDON SEWER LINE
- PROPOSED SEWER MANHOLE
- EXIST SEWER MANHOLE
- PROPOSED SEWER LATERAL AND CLEAN-OUT
- GAS MAIN
- OVERHEAD ELECTRIC
- UNDERGROUND ELECTRIC
- UNDERGROUND TELEPHONE
- PROPOSED FLOW ARROWS
- TREE
- SIGN
- GUY ANCHOR
- BOREHOLE
- CONTROL POINT
- FLOWABLE FILL/CONC
- CUT & REPLACE ASPHALT/CONCRETE
- MILL & OVERLAY
- CAUTION UTILITY CROSSING



The seal appearing on this document was authorized by  
**CARL BAIN**  
 P.E. 56996 ON  
 4/21/2021



REV.	DATE	DESCRIPTION	BY
1	4/21/2021	ADDENDUM #01	CB

**BAIN MEDINA BAIN, INC.**  
 ENGINEERS & SURVEYORS  
 7073 San Pedro, San Antonio, Texas, 78216  
 Phone: 210-494-7223 Fax: 210-490-5120 WWW.BMBI.COM

**C-69 SOUTH ZARZAMORA**  
**SANITARY SEWER LINE "A"**  
**PLAN & PROFILE**

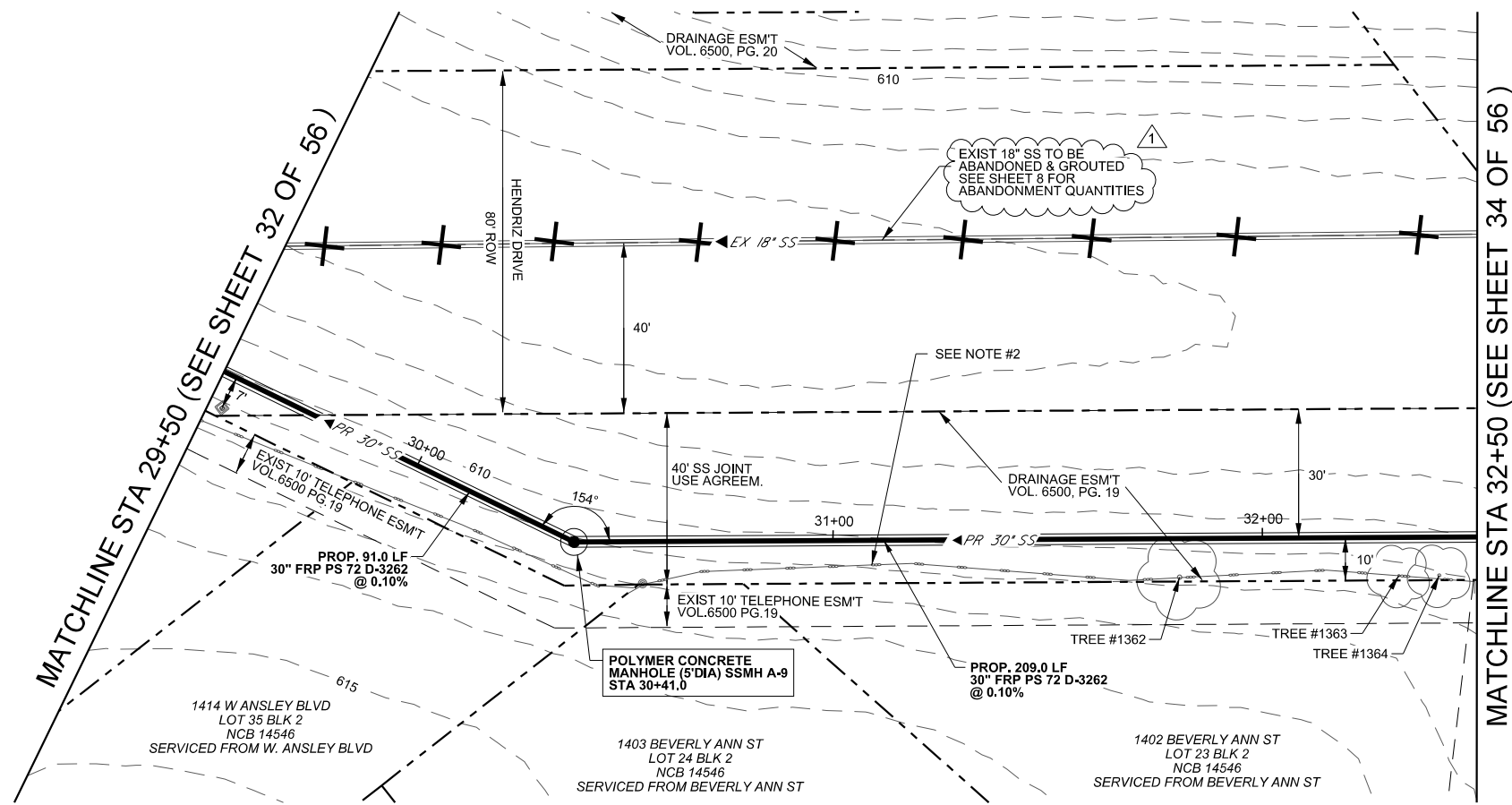
DEVELOPER: \_\_\_\_\_  
 CONT. BUDGET PROJ.  
 SUBMITTED \_\_\_\_\_  
 APPROVED \_\_\_\_\_  
 MAP No. \_\_\_\_\_ SHEET 32 OF 56  
 SECT. No. \_\_\_\_\_ 100% DESIGN  
 DR. MG CK. CC/CB JOB No. 18-4506

THIS DRAWING IS THE PROPERTY OF BAIN MEDINA BAIN, INC. AND SHALL NOT BE USED FOR ANY PURPOSE WITHOUT THE WRITTEN CONSENT OF AN AUTHORIZED AGENT OF BAIN MEDINA BAIN, INC. BAIN MEDINA BAIN, INC. ACCEPTS NO RESPONSIBILITY FOR THE USE OF THIS DRAWING FOR ANY PURPOSE AFTER TEN SIX MONTHS FROM THE DATE INDICATED ON THE DRAWING. ALL RIGHTS RESERVED. COPYRIGHT 2014, BAIN MEDINA BAIN, INC.

4/21/2021

4/21/2021

H:\Work\C-1475\_SAWR (PS-0004E)\_C69\_S\_ZarZamor@d\SAWS\_Sheets\C69\_SWR3\_PPG.dgn

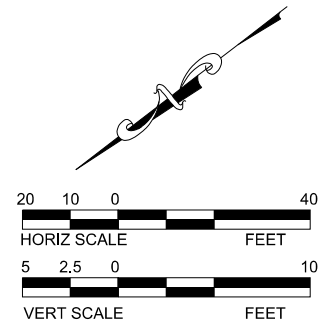


**SEWER LINE "A"**  
**PROPOSED 30" MAIN**  
**STA 29+50 TO STA 32+50**

- NOTE:
- CONTRACTOR SHALL COORDINATE WITH CPS FOR POWER POLE BRACING, REFER TO SP-1000.
  - CONTRACTOR TO REMOVE & RESET FENCE IF REQUIRED FOR CONSTRUCTION. (NSPI) CONTRACTOR IS RESPONSIBLE TO COORDINATE WITH PROPERTY OWNER.
  - CONTRACTOR TO LOCATE AND EXPOSE ALL EXISTING UTILITIES THAT CROSS THE EXISTING SAWS SEWER TO BE OPEN CUT PRIOR TO AND DURING THE OPEN CUT PROCESS TO AVOID DAMAGE TO EXISTING UTILITIES (NSPI).

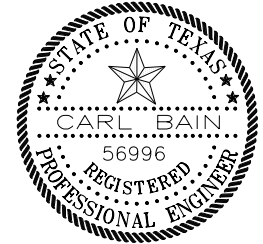
ITEM	DESCRIPTION	QUANT.	UNIT
515.1	TOP SOIL (4") (COSA SPEC)	36	CY
520.1	HYDROMULCHING (COSA SPEC)	1330	SY
550	TRENCH EXCAVATION SAFETY PROTECTION	300	LF
849	SANITARY SEWER ACCEPTANCE TESTING (>18")	300	LF
850	POLYMER CONCRETE MANHOLE (5' DIA)	1	EA
850	POLYMER CONCRETE EXTRA DEPTH MANHOLE (5' DIA) (> 6')	8.4	VF
857	30" FRP (ASTM D-3262) (PS 72) SANITARY SEWER LINE (10'-14')	300	LF
866	SEWER MAIN POST-TELEVISION INSPECTION (=>27")	300	LF

TREE #	TYPE	DIAMETER (IN)	DRIP (FT)
1362	HACKBERRY	11	20
1363	HACKBERRY	6	15
1364	HACKBERRY	6	15

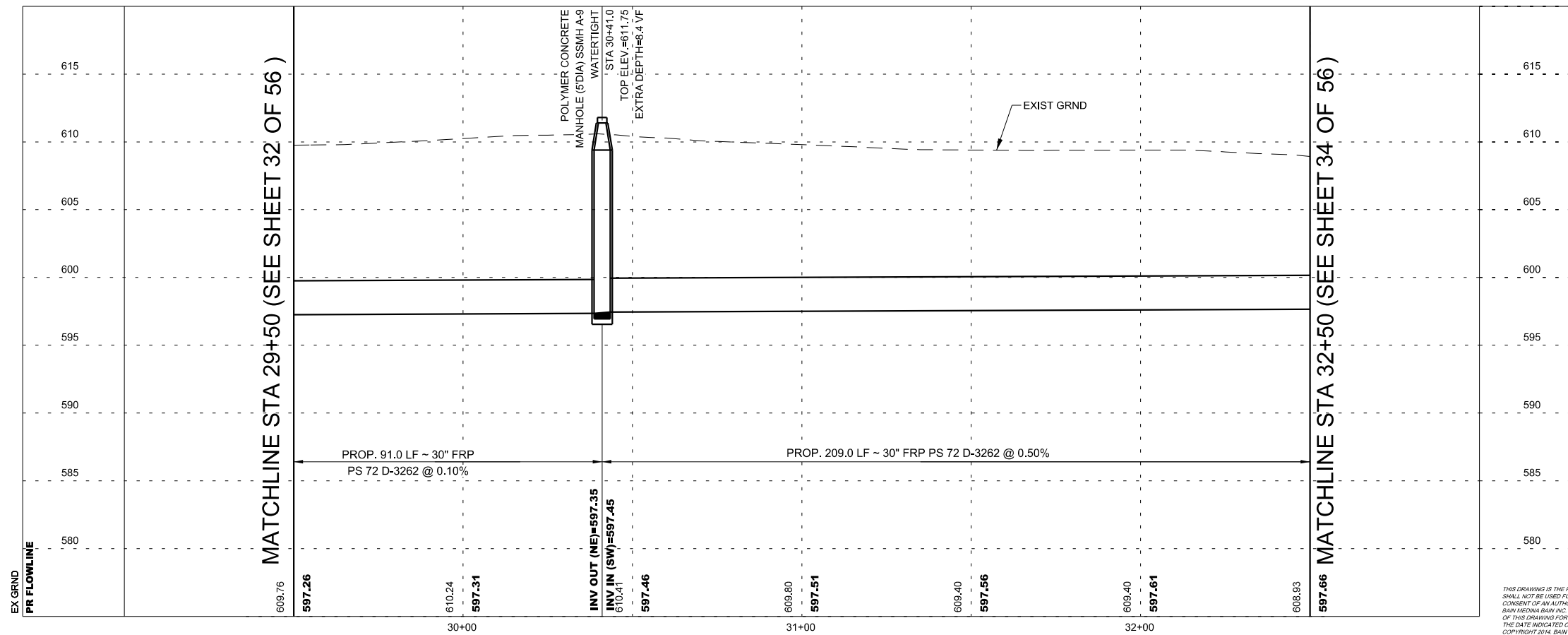


**LEGEND**

- EXISTING WATER METER
- EXISTING FIRE HYDRANT
- EXISTING POWER POLE
- EXISTING WATER VALVE
- EXISTING MAIL BOX
- EXISTING TELECOMM BOX
- EXISTING FLOW ARROW
- PROP WATER MAIN
- EXIST WATER MAIN
- EXIST SANITARY SEWER
- PROP SANITARY SEWER
- ABANDON SEWER LINE
- PROPOSED SEWER MANHOLE
- EXIST SEWER MANHOLE
- PROPOSED SEWER LATERAL AND CLEAN-OUT
- GAS MAIN
- OVERHEAD ELECTRIC
- UNDERGROUND ELECTRIC
- UNDERGROUND TELEPHONE
- PROPOSED FLOW ARROWS
- TREE
- SIGN
- GUY ANCHOR
- BOREHOLE
- CONTROL POINT
- FLOWABLE FILL/CONC
- CUT & REPLACE ASPHALT/CONCRETE
- MILL & OVERLAY
- CAUTION UTILITY CROSSING



The seal appearing on this document was authorized by  
**CARL BAIN**  
 P.E. 56996 ON  
 4/21/2021



REV.	DATE	DESCRIPTION	BY
1	4/21/2021	ADDENDUM #01	CB

**BAIN MEDINA BAIN, INC.**  
**ENGINEERS & SURVEYORS**  
 7073 San Pedro, San Antonio, Texas, 78216  
 Phone: 210-494-7223 Fax: 210-490-5120 WWW.BMBL.COM

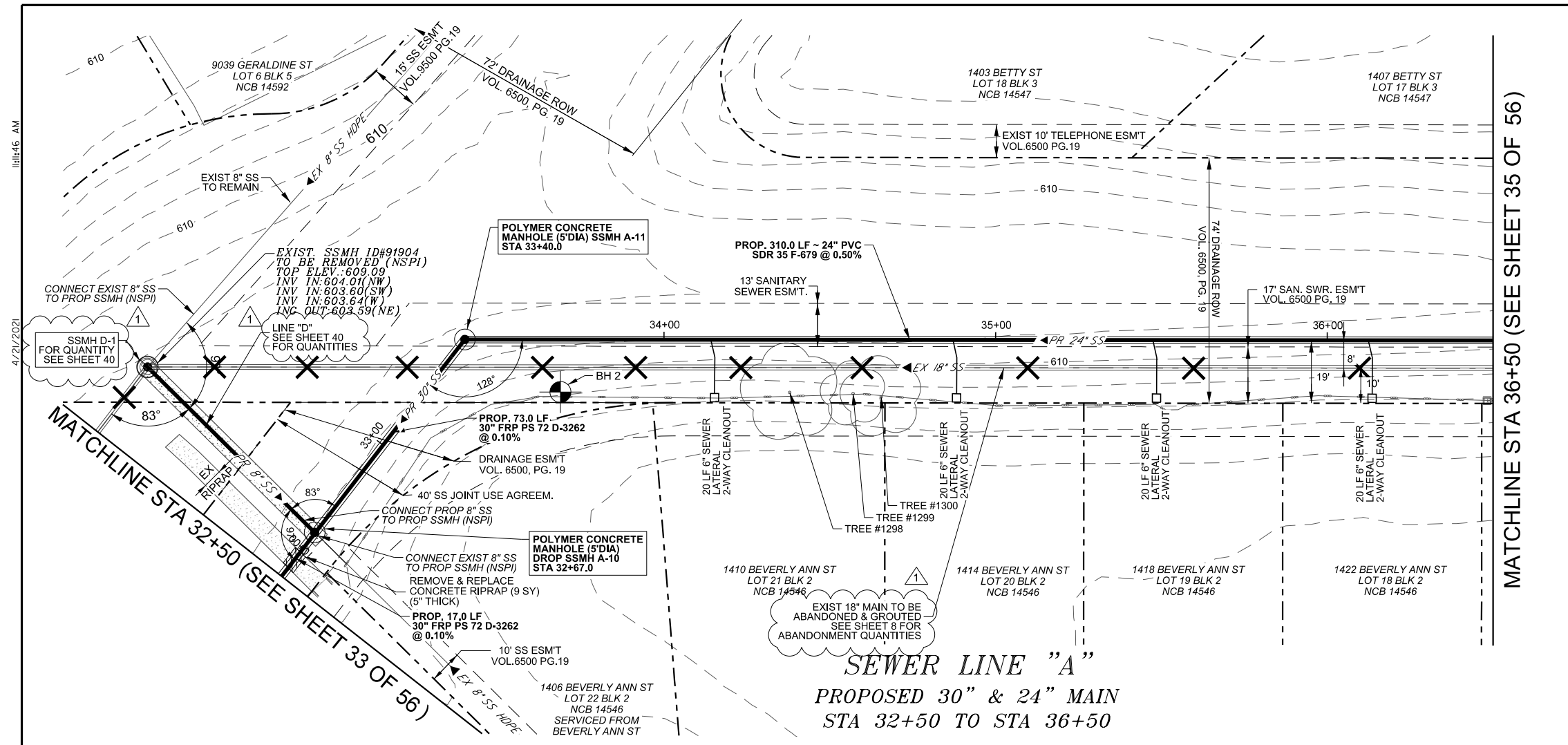
C-69 SOUTH ZARZAMORA  
**SANITARY SEWER LINE "A"**  
**PLAN & PROFILE**

DEVELOPER: \_\_\_\_\_  
 CONT. BUDGET PROJ.  
 SUBMITTED \_\_\_\_\_  
 APPROVED \_\_\_\_\_

MAP No. \_\_\_\_\_ SHEET 33 OF 56  
 SECT. No. \_\_\_\_\_  
 DR. MG CK. CC/CB JOB No. 100% DESIGN 18-4506

THIS DRAWING IS THE PROPERTY OF BAIN MEDINA BAIN, INC. AND SHALL NOT BE USED FOR ANY PURPOSE WITHOUT THE WRITTEN CONSENT OF AN AUTHORIZED AGENT OF BAIN MEDINA BAIN, INC. BAIN MEDINA BAIN, INC. ACCEPTS NO RESPONSIBILITY FOR THE USE OF THIS DRAWING FOR ANY PURPOSE AFTER SIX MONTHS FROM THE DATE INDICATED ON THE DRAWING. ALL RIGHTS RESERVED. COPYRIGHT 2014, BAIN MEDINA BAIN, INC. ©





ITEM	DESCRIPTION	QUANT.	UNIT
103.4	REMOVE MISCELLANEOUS CONCRETE (COSA SPEC)	81	SF
505.1	CONCRETE RIPRAP (5" THICK)(COSA SPEC)	9	SY
515.1	TOP SOIL (4") (COSA SPEC)	48	CY
520.1	HYDROMULCHING (COSA SPEC)	1780	SY
550	TRENCH EXCAVATION SAFETY PROTECTION	400	LF
848	24" PS 115 (ASTM F-679) PVC SANITARY SEWER LINE (6'-10')	310	LF
849	SANITARY SEWER ACCEPTANCE TESTING (>18")	400	LF
850	POLYMER CONCRETE MANHOLE (5' DIA)	1	EA
850	POLYMER CONCRETE DROP MANHOLE (5' DIA)	1	EA
850	POLYMER CONCRETE EXTRA DEPTH MANHOLE (5' DIA) (> 6')	11.8	VF
854	SANITARY SEWER LATERALS, (SDR 26, ASTM 2241, 160 PSI)	80	LF
854	TWO-WAY CLEANOUTS	4	EA
857	30" FRP (ASTM D-3262) (PS 72) SANITARY SEWER LINE (10'-14')	90	LF
866	SEWER MAIN POST-TELEVISION INSPECTION (18"-24")	310	LF
866	SEWER MAIN POST-TELEVISION INSPECTION (>27")	90	LF

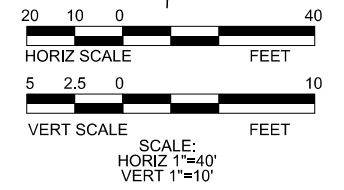
BOREHOLE	SOIL	X	Y	DEPTH
BH 2	FAT CLAY	2,118,654.58	13,671,783.76	15'

TREE #	TYPE	DIAMETER (IN)	DRIP(FT)
1298	HACKBERRY	10	20
1299	HACKBERRY	10	20
1300	HACKBERRY	10	25

NOTE:  
 1. CONTRACTOR SHALL COORDINATE WITH CPS FOR POWER POLE BRACING. REFER TO SP-1000.  
 2. CONTRACTOR TO LOCATE AND EXPOSE ALL EXISTING UTILITIES THAT CROSS THE EXISTING SANITARY SEWER TO BE OPEN CUT PRIOR TO AND DURING THE OPEN CUT PROCESS TO AVOID DAMAGE TO EXISTING UTILITIES (NSPI).

**SEWER LINE "A"**  
 PROPOSED 30" & 24" MAIN  
 STA 32+50 TO STA 36+50



**LEGEND**

- EXISTING WATER METER
- EXISTING FIRE HYDRANT
- EXISTING POWER POLE
- EXISTING WATER VALVE
- EXISTING MAIL BOX
- EXISTING TELECOMM BOX
- EXISTING FLOW ARROW
- PROP WATER MAIN
- EXIST WATER MAIN
- PROP SANITARY SEWER
- EXIST SANITARY SEWER
- ABANDON SEWER LINE
- PROPOSED SEWER MANHOLE
- EXIST SEWER MANHOLE
- PROPOSED SEWER LATERAL AND CLEAN-OUT
- GAS MAIN
- OVERHEAD ELECTRIC
- UNDERGROUND ELECTRIC
- UNDERGROUND TELEPHONE
- PROPOSED FLOW ARROWS
- TREE
- SIGN
- GUY ANCHOR
- BOREHOLE
- CONTROL POINT
- FLOWABLE FILL/CONC
- CUT & REPLACE ASPHALT/CONCRETE
- MILL & OVERLAY
- CAUTION UTILITY CROSSING



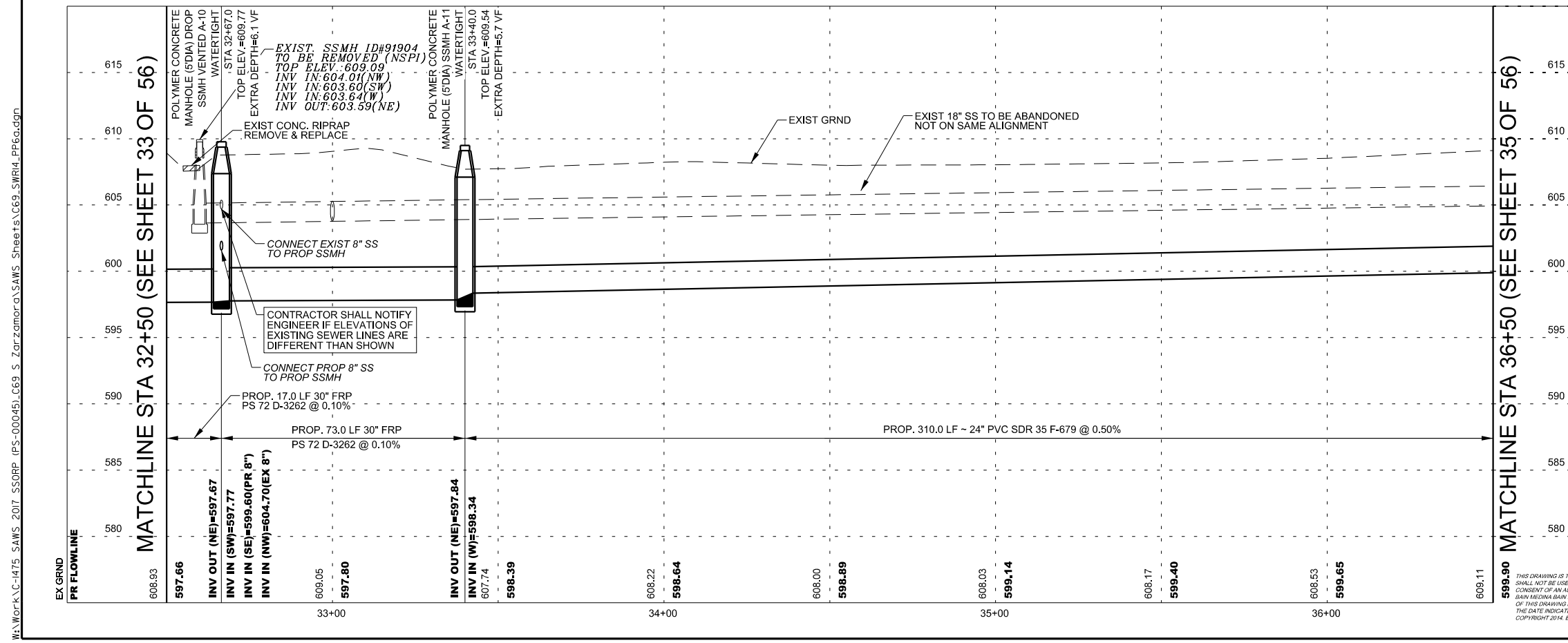
The seal appearing on this document was authorized by  
**CARL BAIN**  
 P.E. 56996 ON  
 4/21/2021

REV.	DATE	DESCRIPTION	BY
1	4/21/2021	ADDENDUM #01	CB

**BAIN MEDINA BAIN, INC.**  
 ENGINEERS & SURVEYORS  
 7073 San Pedro, San Antonio, Texas, 78216  
 Phone: 210-494-7223 Fax: 210-490-5120 WWW.BMBl.COM

C-69 SOUTH ZARZAMORA  
**SANITARY SEWER LINE "A"**  
 PLAN & PROFILE

DEVELOPER:	BUDGET PROJ.	SHEET	34
CONT.		OF	56
SUBMITTED		100% DESIGN	
APPROVED		JOB No.	18-4506
MAP No.			
SECT. No.			
DR. MG	CK. CC/CB		



4/21/2021 4:46 AM H:\Work\C-1475\_SAWP\_2017\_SSDP (P-0004E)\_C69\_S\_Zarzaromor\SAWS\_Sheets\C69\_SWR\4\_PPE.dgn

MATCHLINE STA 36+50 (SEE SHEET 35 OF 56)

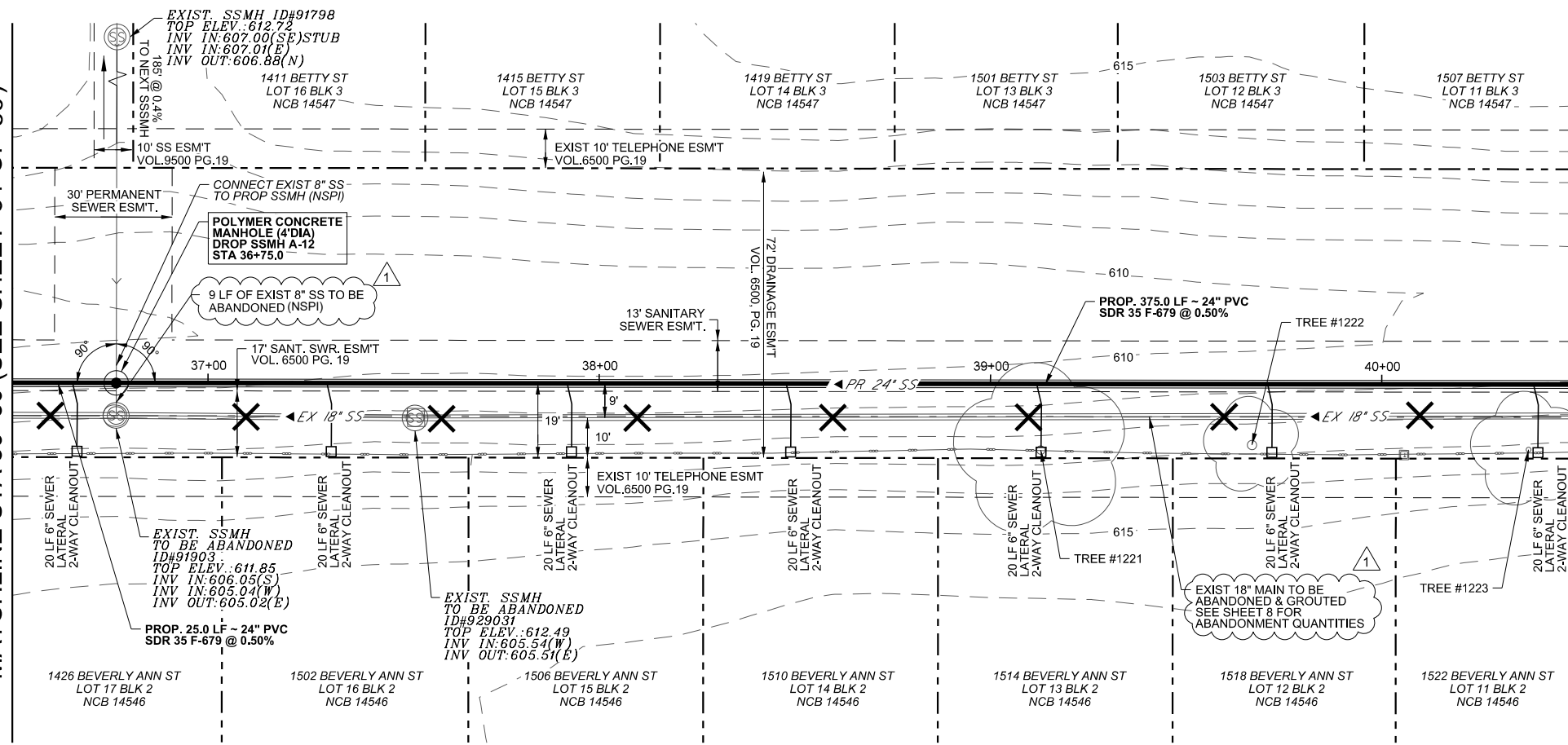
MATCHLINE STA 32+50 (SEE SHEET 33 OF 56)

MATCHLINE STA 36+50 (SEE SHEET 35 OF 56)

THIS DRAWING IS THE PROPERTY OF BAIN MEDINA BAIN, INC. AND SHALL NOT BE USED FOR ANY PURPOSE WITHOUT THE WRITTEN CONSENT OF AN AUTHORIZED AGENT OF BAIN MEDINA BAIN, INC. BAIN MEDINA BAIN, INC. ACCEPTS NO RESPONSIBILITY FOR THE USE OF THIS DRAWING FOR ANY PURPOSE AFTER SIX MONTHS FROM THE DATE INDICATED ON THE DRAWING. ALL RIGHTS RESERVED. COPYRIGHT 2014, BAIN MEDINA BAIN, INC.

MATCHLINE STA 36+50 (SEE SHEET 34 OF 56)

MATCHLINE STA 40+50 (SEE SHEET 36 OF 56)

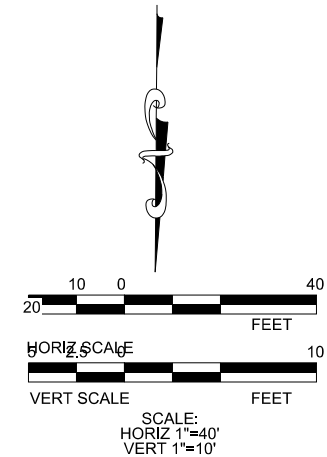


**SEWER LINE "A"**  
**PROPOSED 24" MAIN**  
**STA 36+50 TO STA 40+50**

NOTE:  
 1. CONTRACTOR SHALL COORDINATE WITH CPS FOR POWER POLE BRACING. REFER TO SP-1000.  
 2. CONTRACTOR TO LOCATE AND EXPOSE ALL EXISTING UTILITIES THAT CROSS THE EXISTING SAWS SEWER TO BE OPEN CUT PRIOR TO AND DURING THE OPEN CUT PROCESS TO AVOID DAMAGE TO EXISTING UTILITIES (NSPI).

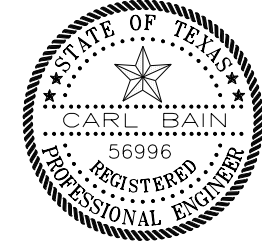
ITEM	DESCRIPTION	QUANT.	UNIT
515.1	TOP SOIL (4") (COSA SPEC)	48	CY
520.1	HYDROMULCHING (COSA SPEC)	1780	SY
550	TRENCH EXCAVATION SAFETY PROTECTION	400	LF
848	24" PS 115 (ASTM F-679) PVC SANITARY SEWER LINE (6'-10')	400	LF
849	SANITARY SEWER ACCEPTANCE TESTING (>18")	400	LF
850	POLYMER CONCRETE DROP MANHOLE (4' DIA)	1	EA
850	POLYMER CONCRETE EXTRA DEPTH MANHOLE (4' DIA) (> 6')	6	VF
854	SANITARY SEWER LATERALS, (SDR 26, ASTM 2241, 160 PSI)	140	LF
854	TWO-WAY CLEANOUTS	7	EA
866	SEWER MAIN POST-TELEVISION INSPECTION (18"-24")	400	LF

TREE #	TYPE	DIAMETER (IN)	DRIP (FT)	PROTECTION
1221	HACKBERRY	23	45	LEVEL II B
1222	HACKBERRY	12	25	LEVEL II B
1223	HACKBERRY	15	30	LEVEL II B



**LEGEND**

- EXISTING WATER METER
- EXISTING FIRE HYDRANT
- EXISTING POWER POLE
- EXISTING WATER VALVE
- EXISTING MAIL BOX
- EXISTING TELECOMM BOX
- EXISTING FLOW ARROW
- PROP WATER MAIN
- EXIST WATER MAIN
- PROP SANITARY SEWER
- EXIST SANITARY SEWER
- ABANDON SEWER LINE
- PROPOSED SEWER MANHOLE
- EXIST SEWER MANHOLE
- PROPOSED SEWER LATERAL AND CLEAN-OUT
- GAS MAIN
- OVERHEAD ELECTRIC
- UNDERGROUND ELECTRIC
- UNDERGROUND TELEPHONE
- PROPOSED FLOW ARROWS
- TREE
- SIGN
- GUY ANCHOR
- BOREHOLE
- CONTROL POINT
- FLOWABLE FILL/CONC
- CUT & REPLACE ASPHALT/CONCRETE
- MILL & OVERLAY
- CAUTION UTILITY CROSSING



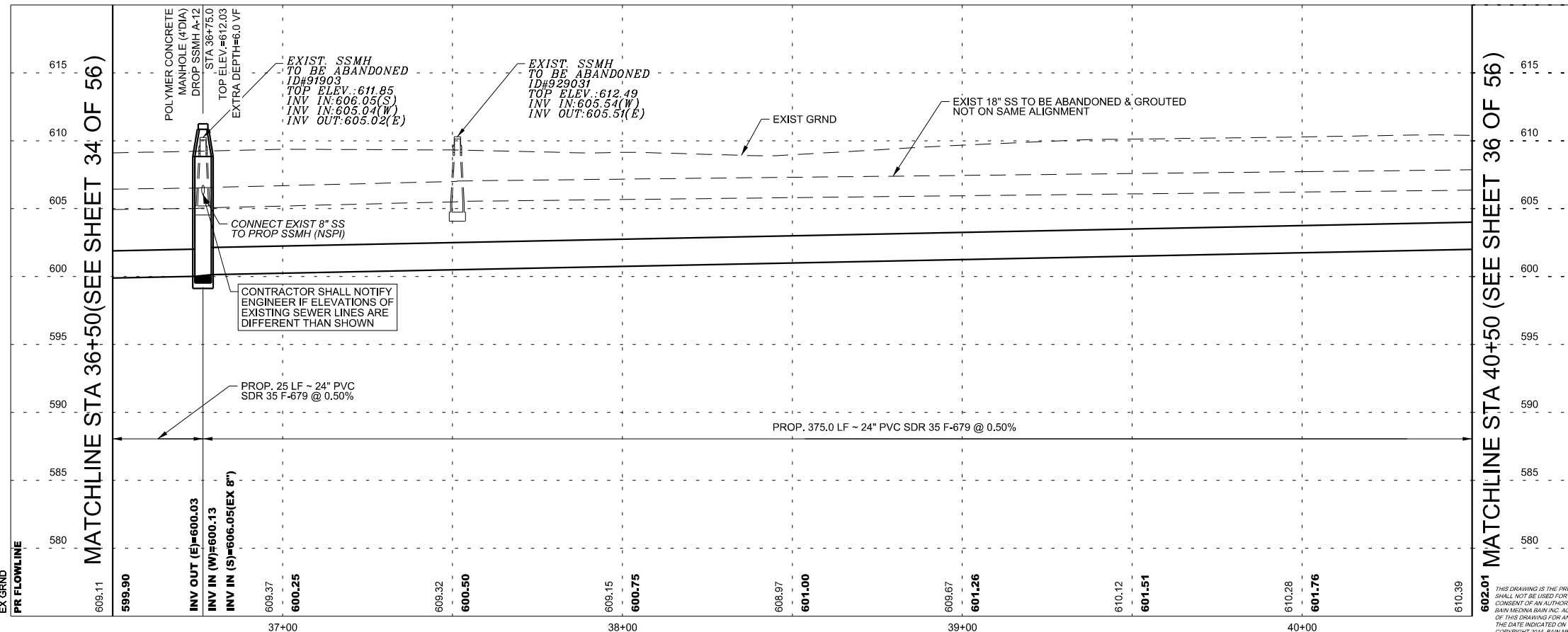
The seal appearing on this document was authorized by  
**CARL BAIN**  
 P.E. 56996 ON  
 4/21/2021

REV.	DATE	DESCRIPTION	BY
1	4/21/2021	ADDENDUM #01	CB

**BAIN MEDINA BAIN, INC.**  
 ENGINEERS & SURVEYORS  
 7073 San Pedro, San Antonio, Texas, 78216  
 Phone: 210-494-7223 Fax: 210-490-5120 WWW.BMBI.COM

C-69 SOUTH ZARZAMORA  
**SANITARY SEWER LINE "A"**  
**PLAN & PROFILE**

DEVELOPER:	BUDGET PROJ.	SHEET
CONT.		35
SUBMITTED		OF 56
APPROVED		
MAP No.	100% DESIGN	
SECT. No.	JOB No. 18-4506	
DR. MG	CK. CC/CB	



MATCHLINE STA 40+50 (SEE SHEET 36 OF 56)

MATCHLINE STA 36+50 (SEE SHEET 34 OF 56)

THIS DRAWING IS THE PROPERTY OF BAIN MEDINA BAIN, INC. AND SHALL NOT BE USED FOR ANY PURPOSE WITHOUT THE WRITTEN CONSENT OF AN AUTHORIZED AGENT OF BAIN MEDINA BAIN, INC. BAIN MEDINA BAIN, INC. ACCEPTS NO RESPONSIBILITY FOR THE USE OF THIS DRAWING FOR ANY PURPOSE AFTER SIX MONTHS FROM THE DATE INDICATED ON THE DRAWING. ALL RIGHTS RESERVED. COPYRIGHT 2014, BAIN MEDINA BAIN, INC. ©

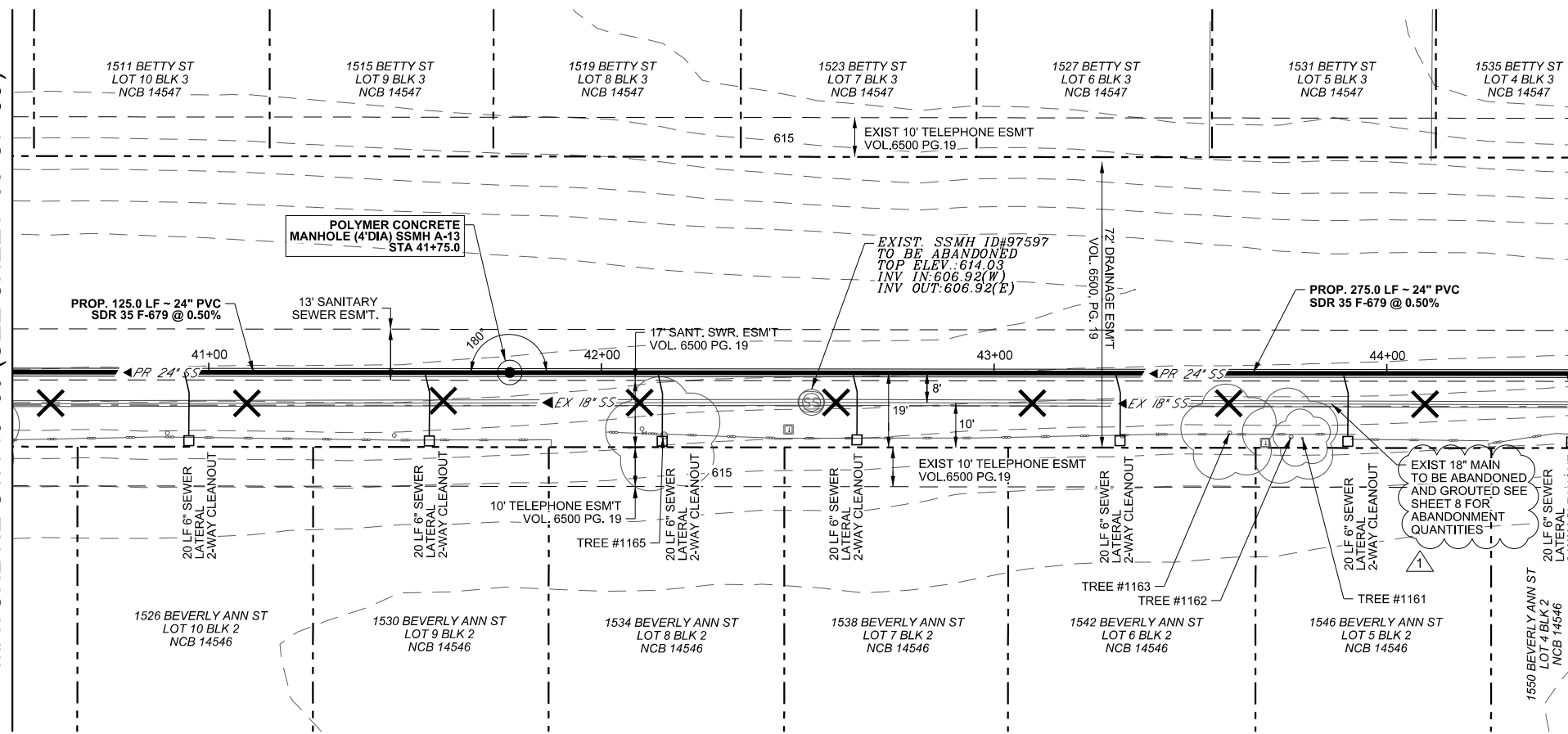
4/21/2021

4/21/2021

H:\Work\C-1475\_SAWS\_2017\_SSDP (P-0004E)\_C69\_S\_ZarZamor@d\SAWS\_Sheets\C69\_SWRIS\_PP8.dgn

MATCHLINE STA 40+50 (SEE SHEET 35 OF 56)

MATCHLINE STA 44+50 (SEE SHEET 37 OF 56)

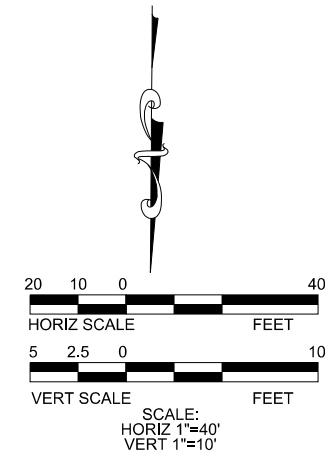


**SEWER LINE "A"**  
**PROPOSED 24" MAIN**  
**STA 40+50 TO STA 44+50**

NOTE:  
 1. CONTRACTOR SHALL COORDINATE WITH CPS FOR POWER POLE BRACING. REFER TO SP-1000.  
 2. CONTRACTOR TO LOCATE AND EXPOSE ALL EXISTING UTILITIES THAT CROSS THE EXISTING SAWS SEWER TO BE OPEN CUT PRIOR TO AND DURING THE OPEN CUT PROCESS TO AVOID DAMAGE TO EXISTING UTILITIES (NSPI).

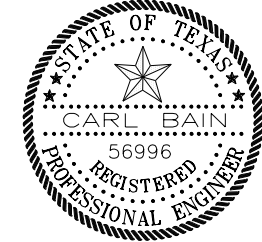
ITEM	DESCRIPTION	QUANT.	UNIT
515.1	TOP SOIL (4") (COSA SPEC)	48	CY
520.1	HYDROMULCHING (COSA SPEC)	1780	SY
550	TRENCH EXCAVATION SAFETY PROTECTION	400	LF
848	24" PS 115 (ASTM F-679) PVC SANITARY SEWER LINE (6'-10')	400	LF
849	SANITARY SEWER ACCEPTANCE TESTING (>18")	400	LF
850	POLYMER CONCRETE MANHOLE (4' DIA)	1	EA
850	POLYMER CONCRETE EXTRA DEPTH MANHOLE (4' DIA) (> 6')	5.4	VF
854	SANITARY SEWER LATERALS. (SDR 26, ASTM 2241, 160 PSI)	140	LF
854	TWO-WAY CLEANOUTS	7	EA
866	SEWER MAIN POST-TELEVISION INSPECTION (18"-24")	400	LF

TREE #	TYPE	DIAMETER (IN)	DRIP(FT)
1161	HACKBERRY	6	15
1162	MESQUITE	12	25
1163	CHINABERRY	13	25
1165	HACKBERRY	15	30



**LEGEND**

EXISTING WATER METER	
EXISTING FIRE HYDRANT	
EXISTING POWER POLE	
EXISTING WATER VALVE	
EXISTING MAIL BOX	
EXISTING TELECOMM BOX	
EXISTING FLOW ARROW	
PROP WATER MAIN	
EXIST WATER MAIN	
PROP SANITARY SEWER	
EXIST SANITARY SEWER	
ABANDON SEWER LINE	
PROPOSED SEWER MANHOLE	
EXIST SEWER MANHOLE	
PROPOSED SEWER LATERAL AND CLEAN-OUT	
GAS MAIN	
OVERHEAD ELECTRIC	
UNDERGROUND ELECTRIC	
UNDERGROUND TELEPHONE	
PROPOSED FLOW ARROWS	
TREE	
SIGN	
GUY ANCHOR	
BORHOLE	
CONTROL POINT	
FLOWABLE FILL/CONC	
CUT & REPLACE ASPHALT/CONCRETE	
MILL & OVERLAY	
CAUTION UTILITY CROSSING	



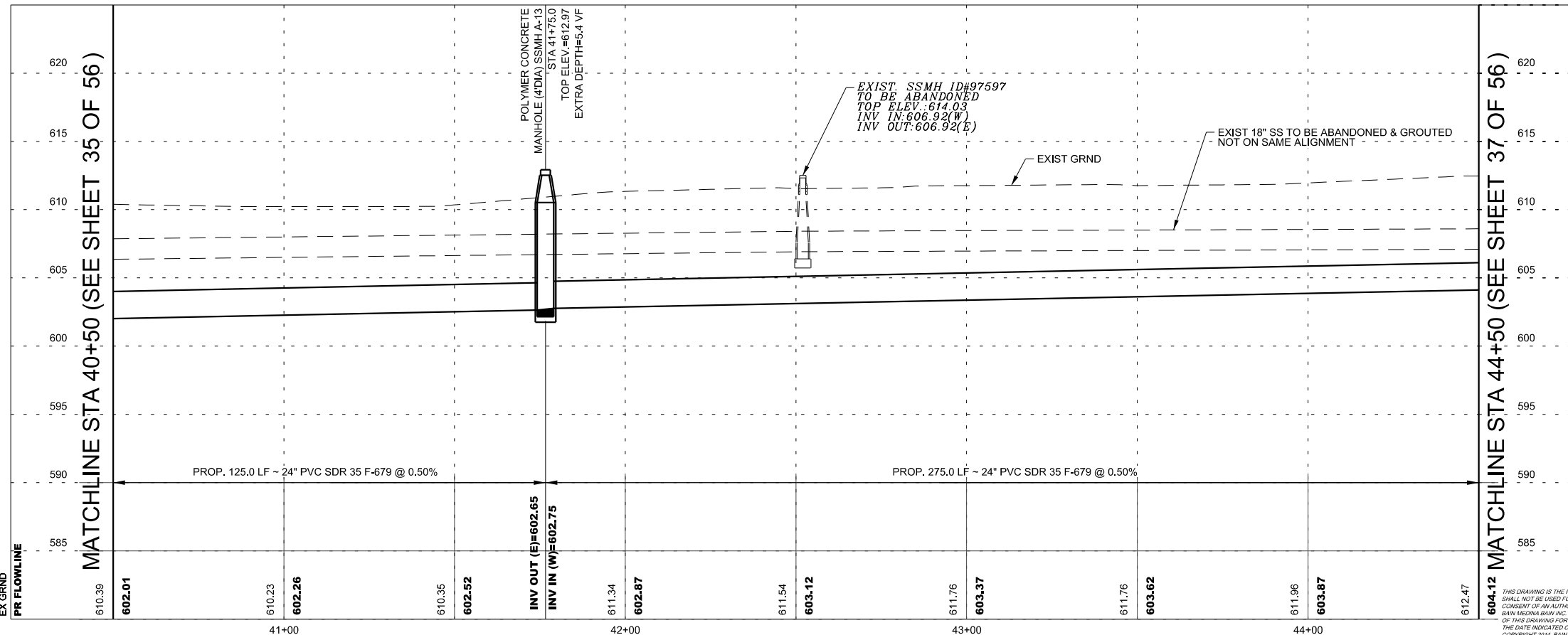
The seal appearing on this document was authorized by  
**CARL BAIN**  
 P.E. 56996 ON  
 4/21/2021

REV.	DATE	DESCRIPTION	BY
1	4/21/2021	ADDENDUM #01	CB

**BAIN MEDINA BAIN, INC.**  
 ENGINEERS & SURVEYORS  
 7073 San Pedro, San Antonio, Texas, 78216  
 Phone: 210-494-7223 Fax: 210-490-5120 WWW.BMBI.COM

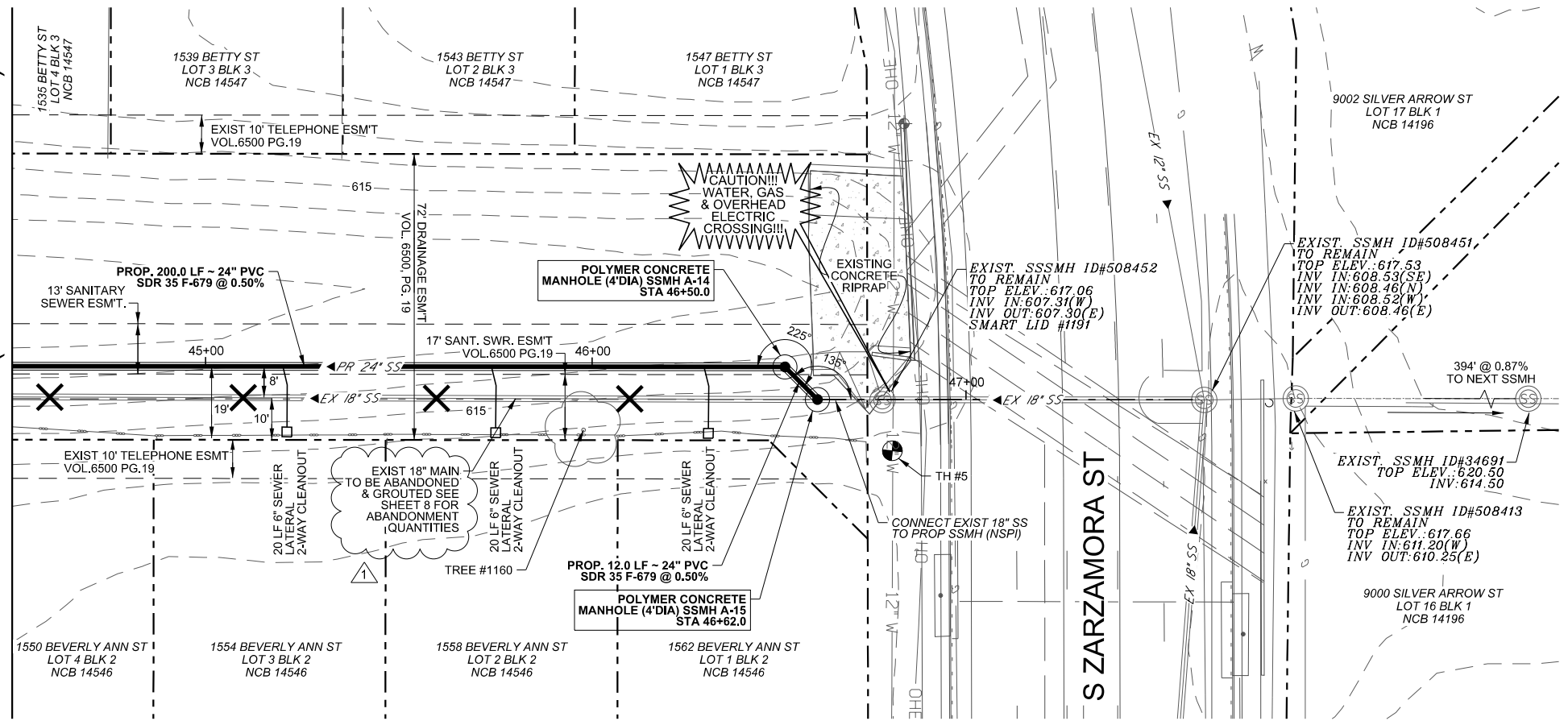
C-69 SOUTH ZARZAMORA  
**SANITARY SEWER LINE "A"**  
**PLAN & PROFILE**

DEVELOPER:	BUDGET PROJ.	SHEET
CONT.		36
SUBMITTED		OF 56
APPROVED		
MAP No.	100% DESIGN	
SECT. No.	JOB No. 18-4506	
DR. MG	CK. CC/CB	



THIS DRAWING IS THE PROPERTY OF BAIN MEDINA BAIN, INC. AND SHALL NOT BE USED FOR ANY PURPOSE WITHOUT THE WRITTEN CONSENT OF AN AUTHORIZED AGENT OF BAIN MEDINA BAIN, INC. BAIN MEDINA BAIN, INC. ACCEPTS NO RESPONSIBILITY FOR THE USE OF THIS DRAWING FOR ANY PURPOSE AFTER SIX MONTHS FROM THE DATE INDICATED ON THE DRAWING. ALL RIGHTS RESERVED. COPYRIGHT 2014, BAIN MEDINA BAIN, INC.

MATCHLINE STA 44+50 (SEE SHEET 36 OF 56)



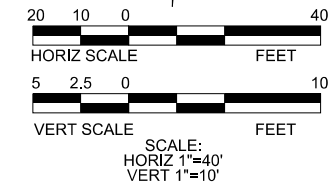
**SEWER LINE "A"**  
**PROPOSED 24" MAIN**  
**STA 44+50 TO STA 46+62**

NOTE:  
 1. CONTRACTOR SHALL COORDINATE WITH CPS FOR POWER POLE BRACING. REFER TO SP-1000.  
 2. CONTRACTOR TO LOCATE AND EXPOSE ALL EXISTING UTILITIES THAT CROSS THE EXISTING SAWS SEWER TO BE OPEN CUT PRIOR TO AND DURING THE OPEN CUT PROCESS TO AVOID DAMAGE TO EXISTING UTILITIES (NSPI).

ITEM	DESCRIPTION	QUANT.	UNIT
515.1	TOP SOIL (4") (COSA SPEC)	26	CY
520.1	HYDROMULCHING (COSA SPEC)	942	SY
550	TRENCH EXCAVATION SAFETY PROTECTION	212	LF
848	24" PS 115 (ASTM F-679) PVC SANITARY SEWER LINE (6'-10')	212	LF
849	SANITARY SEWER ACCEPTANCE TESTING (>18")	212	LF
850	POLYMER CONCRETE MANHOLE (4' DIA)	2	EA
850	POLYMER CONCRETE EXTRA DEPTH MANHOLE (4' DIA) (> 6')	12.6	VF
854	SANITARY SEWER LATERALS. (SDR 26, ASTM 2241, 160 PSI)	60	LF
854	TWO-WAY CLEANOUTS	3	EA
866	SEWER MAIN POST-TELEVISION INSPECTION (18"-24")	212	LF

POTHOLE	UTILITY	X	Y	DEPTH
TH 5	12" STEEL WATER	2,116,985.19	13,669,464.72	4.88'

TREE #	TYPE	DIAMETER (IN)	DRIP (FT)
1160	RETAMA	12	20



The seal appearing on this document was authorized by  
**CARL BAIN**  
 P.E. 56996 ON  
 4/21/2021

**LEGEND**

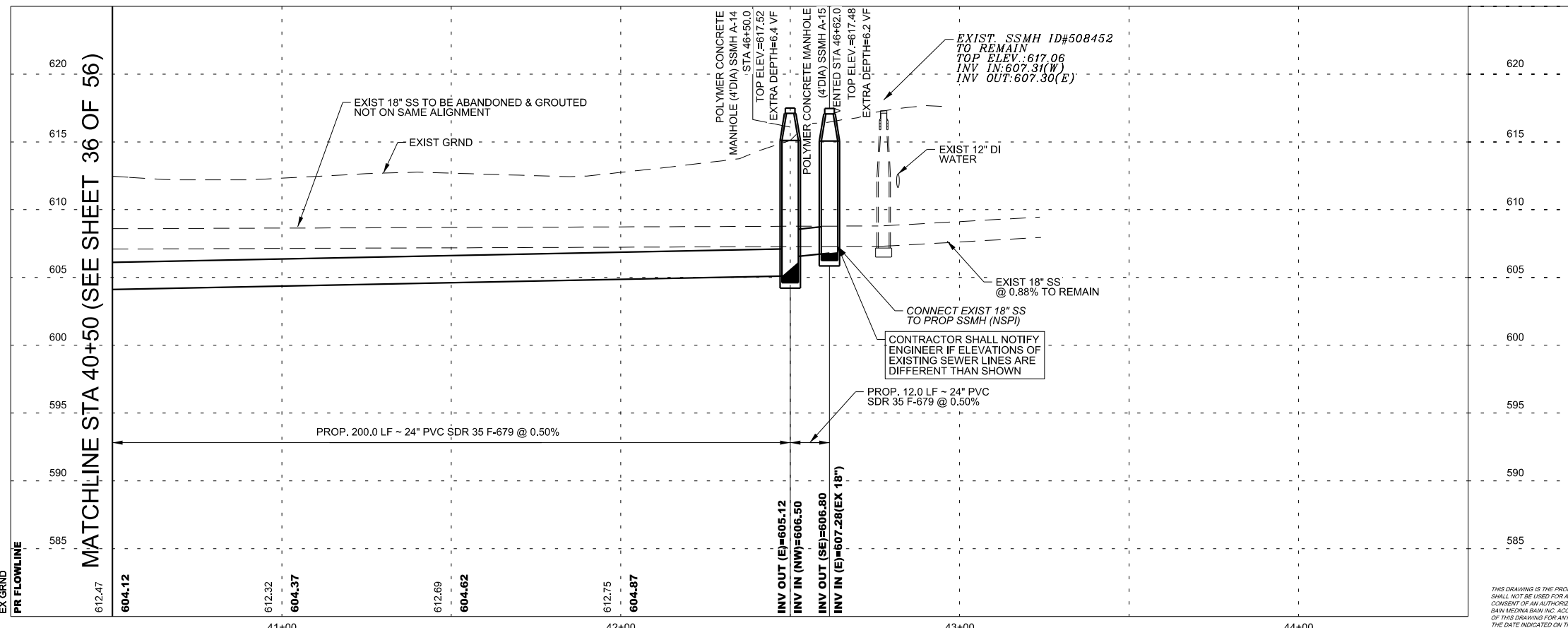
- EXISTING WATER METER
- EXISTING FIRE HYDRANT
- EXISTING POWER POLE
- EXISTING WATER VALVE
- EXISTING MAIL BOX
- EXISTING TELECOMM BOX
- EXISTING FLOW ARROW
- PROP WATER MAIN
- EXIST WATER MAIN
- PROP SANITARY SEWER
- EXIST SANITARY SEWER
- ABANDON SEWER LINE
- PROPOSED SEWER MANHOLE
- EXIST SEWER MANHOLE
- PROPOSED SEWER LATERAL AND CLEAN-OUT
- GAS MAIN
- OVERHEAD ELECTRIC
- UNDERGROUND ELECTRIC
- UNDERGROUND TELEPHONE
- PROPOSED FLOW ARROWS
- TREE
- SIGN
- GUY ANCHOR
- BOREHOLE
- CONTROL POINT
- FLOWABLE FILL/CONC
- CUT & REPLACE ASPHALT/CONCRETE
- MILL & OVERLAY
- CAUTION UTILITY CROSSING

REV.	DATE	DESCRIPTION	BY
1	4/21/2021	ADDENDUM #01	CB

**BAIN MEDINA BAIN, INC.**  
 ENGINEERS & SURVEYORS  
 7073 San Pedro, San Antonio, Texas, 78216  
 Phone: 210-494-7223 Fax: 210-490-5120 WWW.BMBI.COM

C-69 SOUTH ZARZAMORA  
**SANITARY SEWER LINE "A"**  
**PLAN & PROFILE**

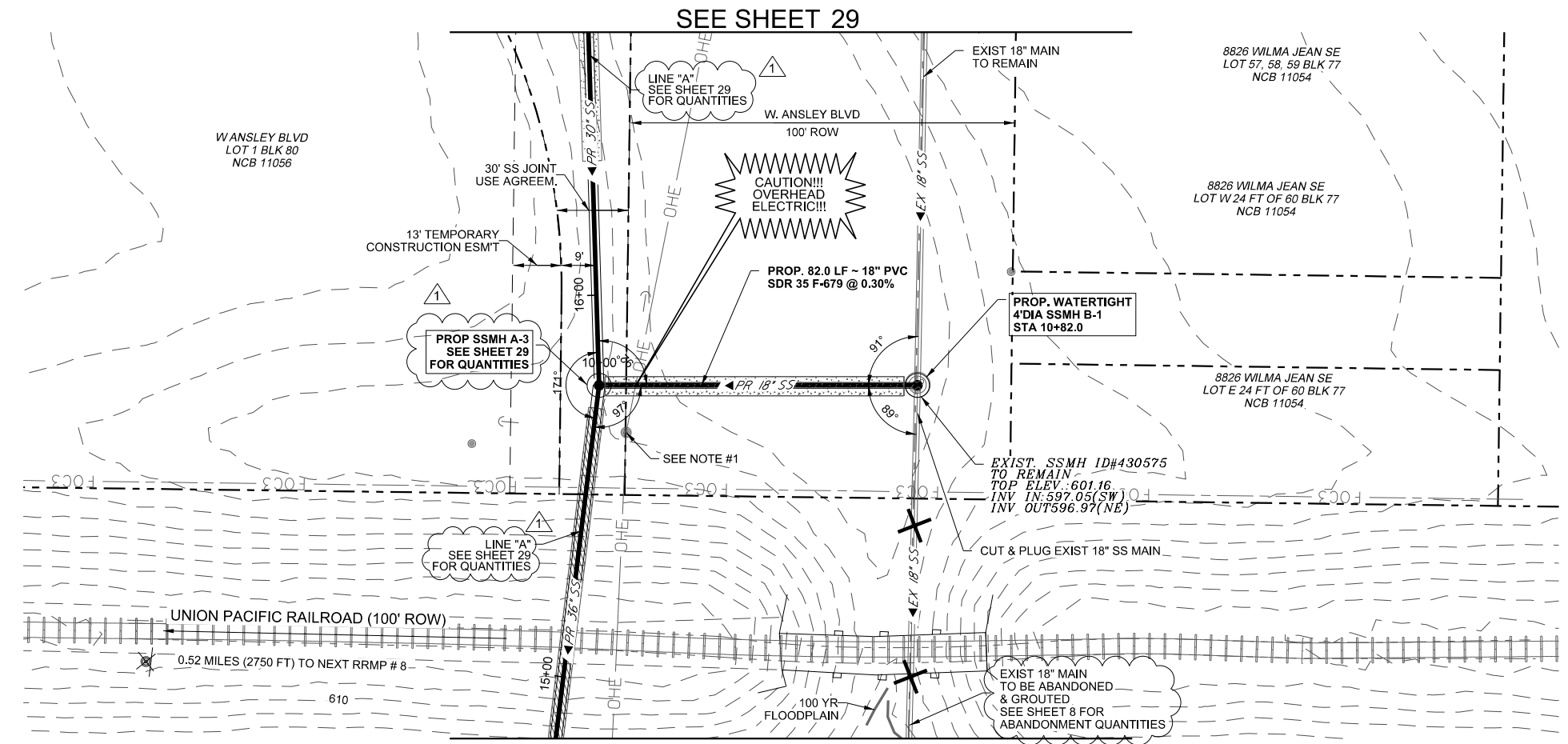
DEVELOPER:	BUDGET PROJ.
CONT.	
SUBMITTED	
APPROVED	
MAP No.	
SECT. No.	100% DESIGN
DR. MG	CK. CC/CB
JOB No.	18-4506
SHEET	37 OF 56



THIS DRAWING IS THE PROPERTY OF BAIN MEDINA BAIN, INC. AND SHALL NOT BE USED FOR ANY PURPOSE WITHOUT THE WRITTEN CONSENT OF AN AUTHORIZED AGENT OF BAIN MEDINA BAIN, INC. BAIN MEDINA BAIN, INC. ACCEPTS NO RESPONSIBILITY FOR THE USE OF THIS DRAWING FOR ANY PURPOSE AFTER SIX MONTHS FROM THE DATE INDICATED ON THE DRAWING. ALL RIGHTS RESERVED. COPYRIGHT 2014, BAIN MEDINA BAIN, INC. ©

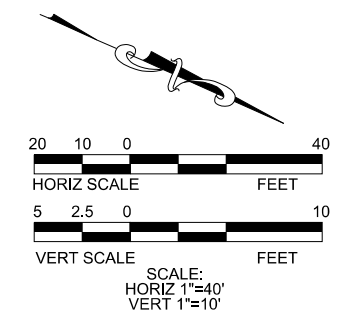
4/21/2021  
 H:\Work\C-1475\_SAWP (P5-0004E)\_C69\_S\_ZarZamora\0\SAMS\_Sheets\C69\_SWRG\_PP9.dgn

ITEM	DESCRIPTION	QUANT.	UNIT
413	FLOWABLE FILL	16	CY
515.1	TOP SOIL (4") (COSA SPEC)	10	CY
520.1	HYDROMULCHING (COSA SPEC)	364	SY
550	TRENCH EXCAVATION SAFETY PROTECTION	82	LF
848	18" PS 115 (ASTM F-679) PVC SANITARY SEWER LINE (0'-6")	82	LF
849	SANITARY SEWER ACCEPTANCE TESTING (8"-18")	82	LF
852	STANDARD 4' MANHOLE (0' - 6") 4' Dia	1	EA
866	SEWER MAIN POST-TELEVISION INSPECTION (18"-24")	82	LF



**SEE SHEET 29**  
**SEWER LINE "B"**  
**PROPOSED 18" MAIN**  
**STA 10+00 TO STA 10+82**

NOTE:  
 1. CONTRACTOR SHALL COORDINATE WITH CPS FOR POWER POLE BRACING, REFER TO SP-1000.  
 2. CONTRACTOR TO LOCATE AND EXPOSE ALL EXISTING UTILITIES THAT CROSS THE EXISTING SAWS SEWER TO BE OPEN CUT PRIOR TO AND DURING THE OPEN CUT PROCESS TO AVOID DAMAGE TO EXISTING UTILITIES (NSPI).

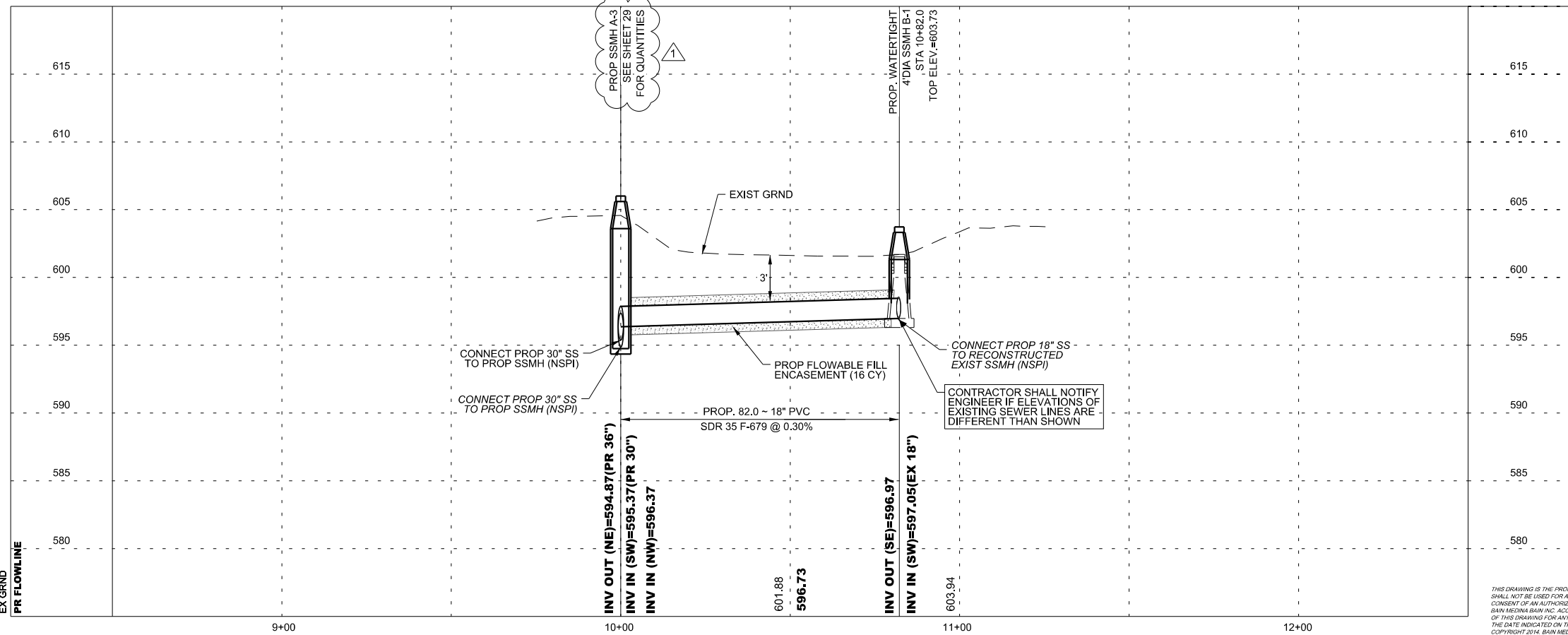


**LEGEND**

- EXISTING WATER METER
- EXISTING FIRE HYDRANT
- EXISTING POWER POLE
- EXISTING WATER VALVE
- EXISTING MAIL BOX
- EXISTING TELECOMM BOX
- EXISTING FLOW ARROW
- PROP WATER MAIN
- EXIST WATER MAIN
- PROP SANITARY SEWER
- EXIST SANITARY SEWER
- ABANDON SEWER LINE
- PROPOSED SEWER MANHOLE
- EXIST SEWER MANHOLE
- PROPOSED SEWER LATERAL AND CLEAN-OUT
- GAS MAIN
- OVERHEAD ELECTRIC
- UNDERGROUND ELECTRIC
- UNDERGROUND TELEPHONE
- PROPOSED FLOW ARROWS
- TREE
- SIGN
- GUY ANCHOR
- BOREHOLE
- CONTROL POINT
- FLOWABLE FILL/CONC
- CUT & REPLACE ASPHALT/CONCRETE
- MILL & OVERLAY
- CAUTION UTILITY CROSSING



The seal appearing on this document was authorized by  
**CARL BAIN**  
 P.E. 56996 ON  
 4/21/2021



REV.	DATE	DESCRIPTION	BY
1	4/21/2021	ADDENDUM #01	CB

**BAIN MEDINA BAIN, INC.**  
**ENGINEERS & SURVEYORS**  
 7825 F-001712  
 7073 San Pedro, San Antonio, Texas, 78216  
 Phone: 210-494-7223 Fax: 210-490-5120 WWW.BMBI.COM

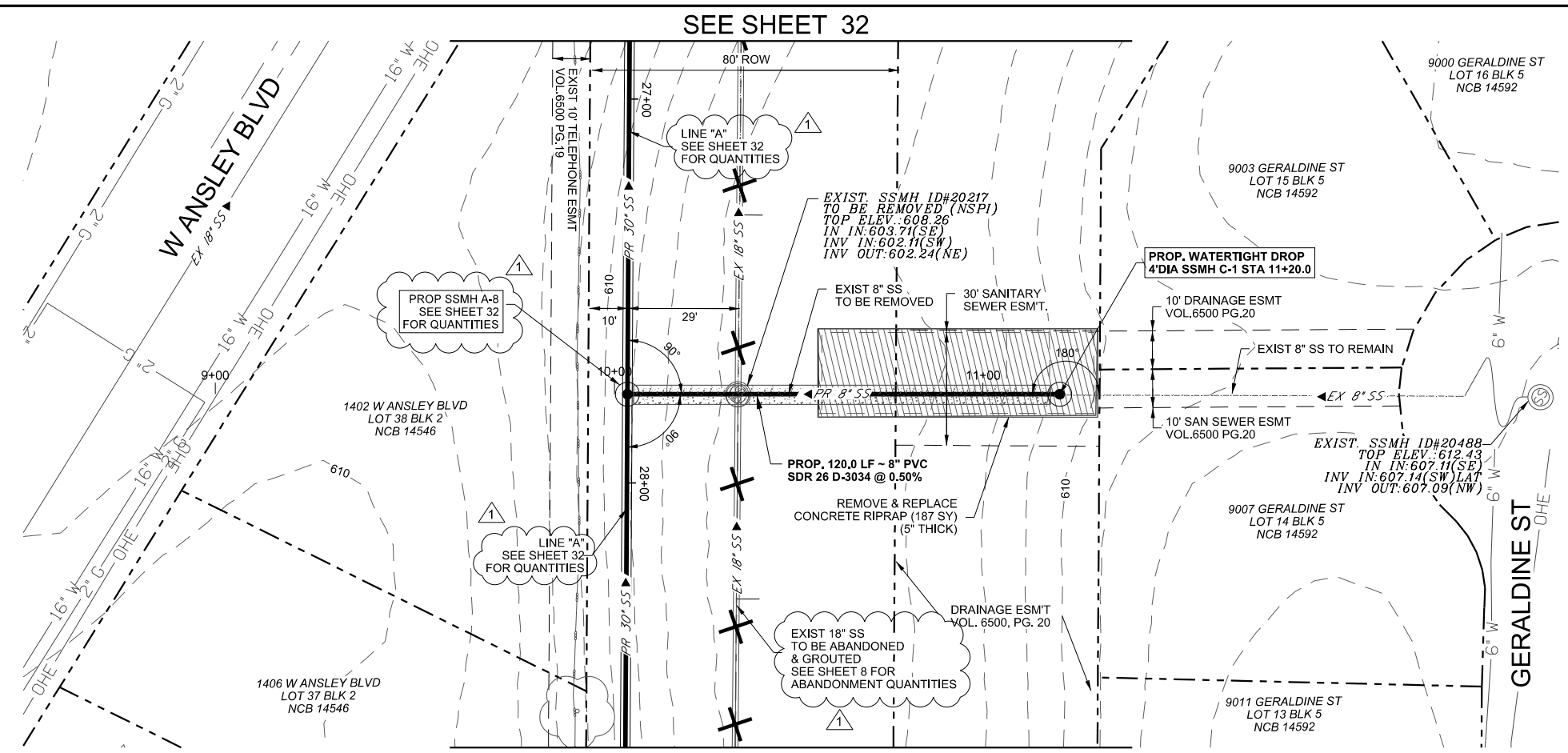
C-69 SOUTH ZARZAMORA  
**SANITARY SEWER LINE "B"**  
**PLAN & PROFILE**

DEVELOPER:		BUDGET PROJ.	
CONT.			
SUBMITTED			
APPROVED			
MAP No.	100% DESIGN		SHEET
SECT. No.	JOB No. 18-4506		38
DR. MG	CK.	CC/CB	OF 56

THIS DRAWING IS THE PROPERTY OF BAIN MEDINA BAIN, INC. AND SHALL NOT BE USED FOR ANY PURPOSE WITHOUT THE WRITTEN CONSENT OF AN AUTHORIZED AGENT OF BAIN MEDINA BAIN, INC. BAIN MEDINA BAIN, INC. ACCEPTS NO RESPONSIBILITY FOR THE USE OF THIS DRAWING FOR ANY PURPOSE AFTER SIX MONTHS FROM THE DATE INDICATED ON THE DRAWING. ALL RIGHTS RESERVED. COPYRIGHT 2014, BAIN MEDINA BAIN, INC.

4/21/2021

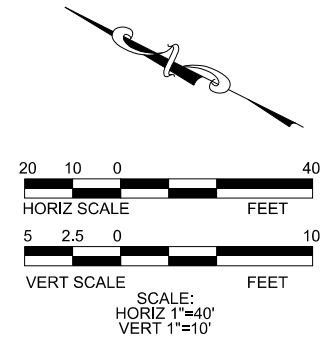
W:\Work\C-1475\_SAWR (P5-0004E)\_C69\_S\_ZarZamor@d\SAWS\_Sheets\C69\_SWRIT\_P10.dgn



SEE SHEET 32  
**SEWER LINE "C"**  
 PROPOSED 8" MAIN  
 STA 10+00 TO STA 11+20

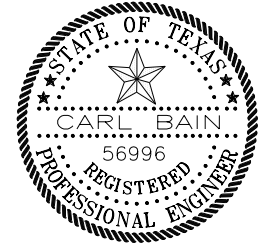
NOTE:  
 1. CONTRACTOR SHALL COORDINATE WITH CPS FOR POWER POLE BRACING. REFER TO SP-1000.  
 2. CONTRACTOR TO LOCATE AND EXPOSE ALL EXISTING UTILITIES THAT CROSS THE EXISTING SAWS SEWER TO BE OPEN CUT PRIOR TO AND DURING THE OPEN CUT PROCESS TO AVOID DAMAGE TO EXISTING UTILITIES (NSPI).

ITEM	DESCRIPTION	QUANT.	UNIT
103.4	REMOVE MISCELLANEOUS CONCRETE (COSA SPEC)	1680	SF
413	FLOWABLE FILL	16	CY
505.1	CONCRETE RIPRAP (6" THICK)(COSA SPEC)	187	SY
515.1	TOP SOIL (4") (COSA SPEC)	10	CY
520.1	HYDROMULCHING (COSA SPEC)	533	SY
550	TRENCH EXCAVATION SAFETY PROTECTION	120	LF
848	8" SDR-26 (D2241) PVC SANITARY SEWER LINE (6'-10')	120	LF
849	SANITARY SEWER ACCEPTANCE TESTING (8"-18")	120	LF
852	STANDARD 4" DROP MANHOLE (0' - 6') 4' Dia	1	EA
852	STANDARD EXTRA DEPTH MANHOLES (> 6')	2.3	VF
866	SEWER MAIN POST-TELEVISION INSPECTION (8"-15")	120	LF

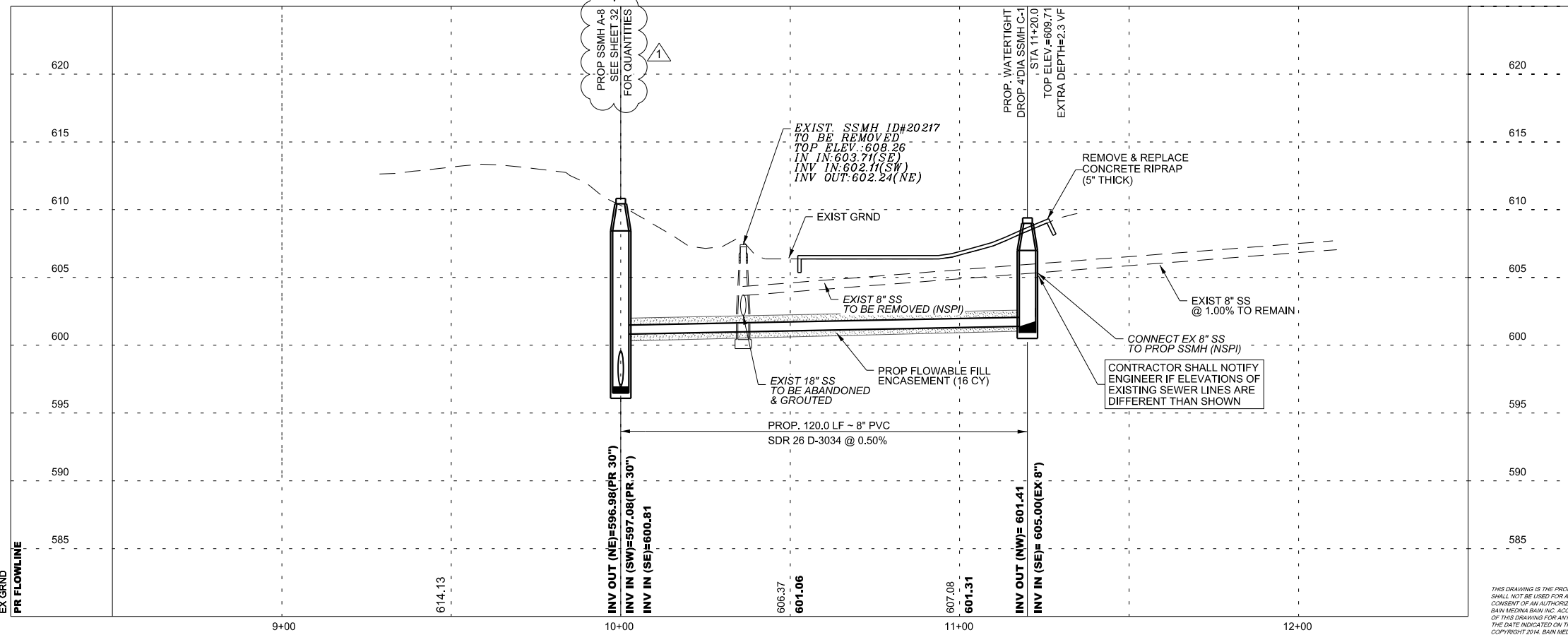


**LEGEND**

- EXISTING WATER METER
- EXISTING FIRE HYDRANT
- EXISTING POWER POLE
- EXISTING WATER VALVE
- EXISTING MAIL BOX
- EXISTING TELECOMM BOX
- EXISTING FLOW ARROW
- PROP WATER MAIN
- EXIST WATER MAIN
- PROP SANITARY SEWER
- EXIST SANITARY SEWER
- ABANDON SEWER LINE
- PROPOSED SEWER MANHOLE
- EXIST SEWER MANHOLE
- PROPOSED SEWER LATERAL AND CLEAN-OUT
- GAS MAIN
- OVERHEAD ELECTRIC
- UNDERGROUND ELECTRIC
- UNDERGROUND TELEPHONE
- PROPOSED FLOW ARROWS
- TREE
- SIGN
- GUY ANCHOR
- BOREHOLE
- CONTROL POINT
- FLOWABLE FILL/CONC
- CUT & REPLACE ASPHALT/CONCRETE
- MILL & OVERLAY
- CAUTION UTILITY CROSSING



The seal appearing on this document was authorized by  
**CARL BAIN**  
 P.E. 56996 ON  
 4/21/2021



THIS DRAWING IS THE PROPERTY OF BAIN MEDINA BAIN, INC. AND SHALL NOT BE USED FOR ANY PURPOSE WITHOUT THE WRITTEN CONSENT OF AN AUTHORIZED AGENT OF BAIN MEDINA BAIN, INC. BAIN MEDINA BAIN, INC. ACCEPTS NO RESPONSIBILITY FOR THE USE OF THIS DRAWING FOR ANY PURPOSE AFTER SIX MONTHS FROM THE DATE INDICATED ON THE DRAWING. ALL RIGHTS RESERVED. COPYRIGHT 2014, BAIN MEDINA BAIN, INC. ©

REV.	DATE	DESCRIPTION	BY
1	4/21/2021	ADDENDUM #01	CB

**BAIN MEDINA BAIN, INC.**  
 ENGINEERS & SURVEYORS  
 7073 San Pedro, San Antonio, Texas, 78216  
 Phone: 210-494-7223 Fax: 210-490-5120 WWW.BMBL.COM

C-69 SOUTH ZARZAMORA  
**SANITARY SEWER LINE "C"**  
 PLAN & PROFILE

DEVELOPER: \_\_\_\_\_  
 CONT. \_\_\_\_\_ BUDGET PROJ. \_\_\_\_\_

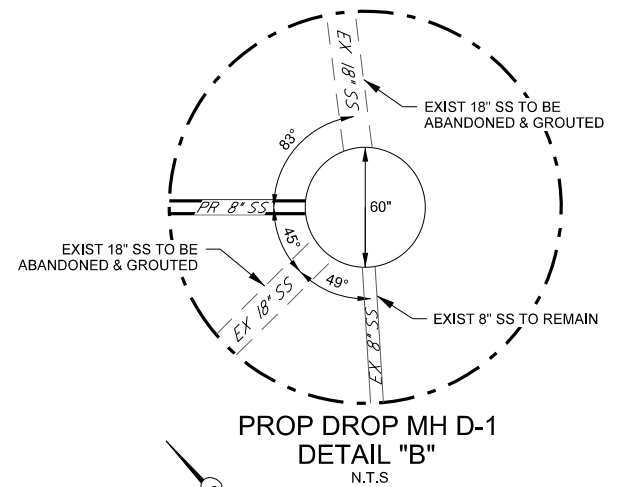
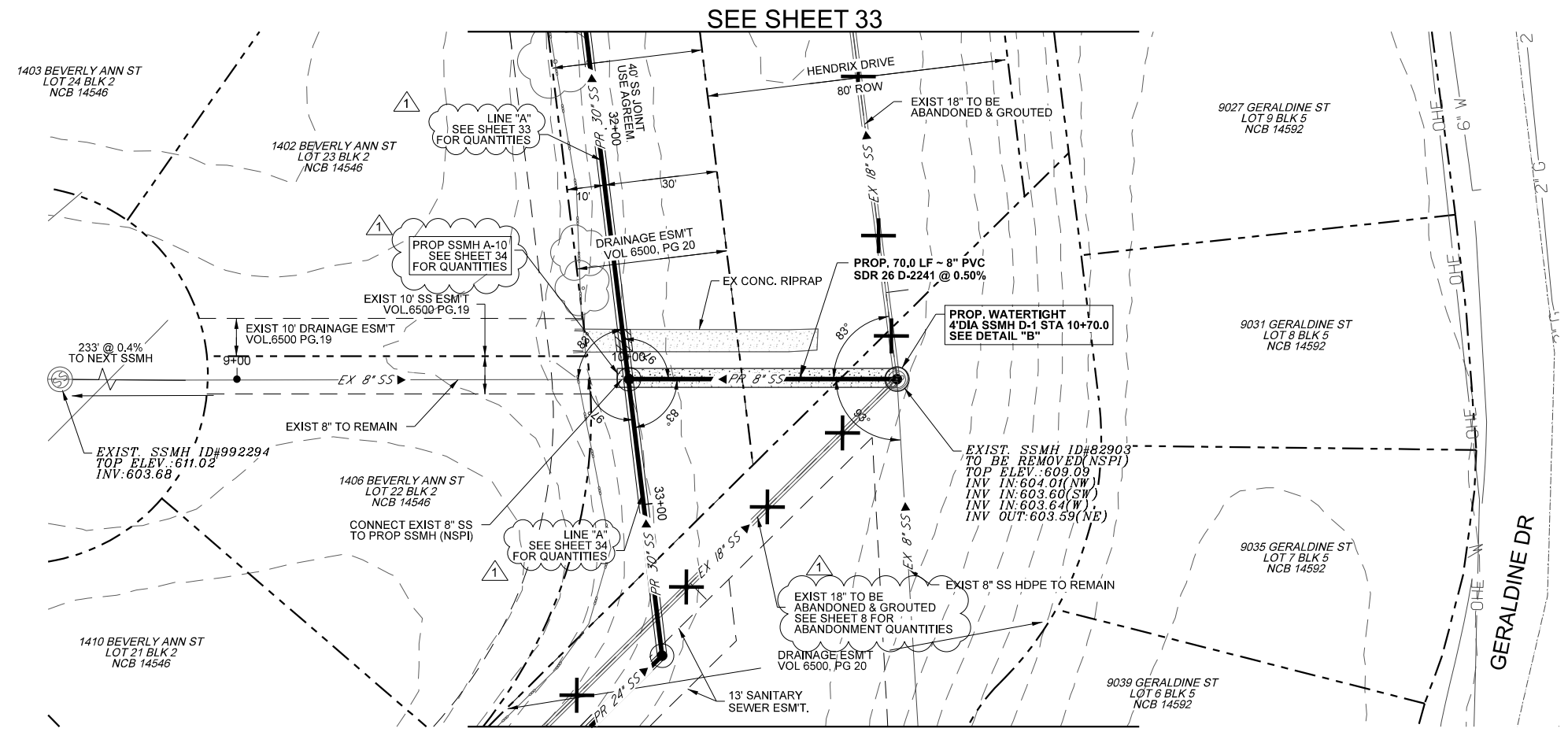
SUBMITTED \_\_\_\_\_  
 APPROVED \_\_\_\_\_

MAP No. \_\_\_\_\_ SHEET 39  
 SECT. No. \_\_\_\_\_ 100% DESIGN  
 DR. MG CK. CC/CB JOB No. 18-4506 OF 56

4/21/2021

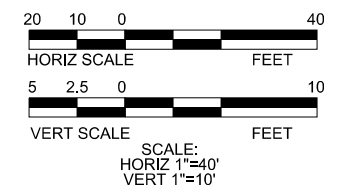
W:\Work\C-1475\_SAWP\_2017\_SSORP (P5-0004E)\_C69\_S\_ZarZamora\0\SAMS\_Sheets\C69\_SWRB\_PPlan.dgn

ITEM	DESCRIPTION	QUANT.	UNIT
413	FLOWABLE FILL	12	CY
515.1	TOP SOIL (4") (COSA SPEC)	8	CY
520.1	HYDROMULCHING (COSA SPEC)	310	SY
550	TRENCH EXCAVATION SAFETY PROTECTION	70	LF
848	8" SDR-26 (D2241) PVC SANITARY SEWER LINE (6'-10")	70	LF
849	SANITARY SEWER ACCEPTANCE TESTING (8"-18")	70	LF
850	POLYMER CONCRETE MANHOLE (4' DIA)	1	EA
850	POLYMER CONCRETE EXTRA DEPTH MANHOLE (4' DIA) (>6')	2.5	VF
866	SEWER MAIN POST-TELEVISION INSPECTION (8"-15")	70	LF



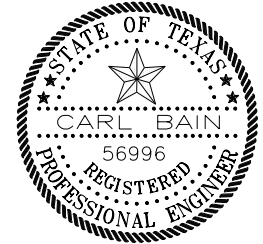
SEE SHEET 34  
**SEWER LINE "D"**  
 PROPOSED 8" MAIN  
 STA 10+00 TO STA 10+70

NOTE:  
 1. CONTRACTOR SHALL COORDINATE WITH CPS FOR POWER POLE BRACING, REFER TO SP-1000.  
 2. CONTRACTOR TO LOCATE AND EXPOSE ALL EXISTING UTILITIES THAT CROSS THE EXISTING SAWS SEWER TO BE OPEN CUT PRIOR TO AND DURING THE OPEN CUT PROCESS TO AVOID DAMAGE TO EXISTING UTILITIES (NSPI).

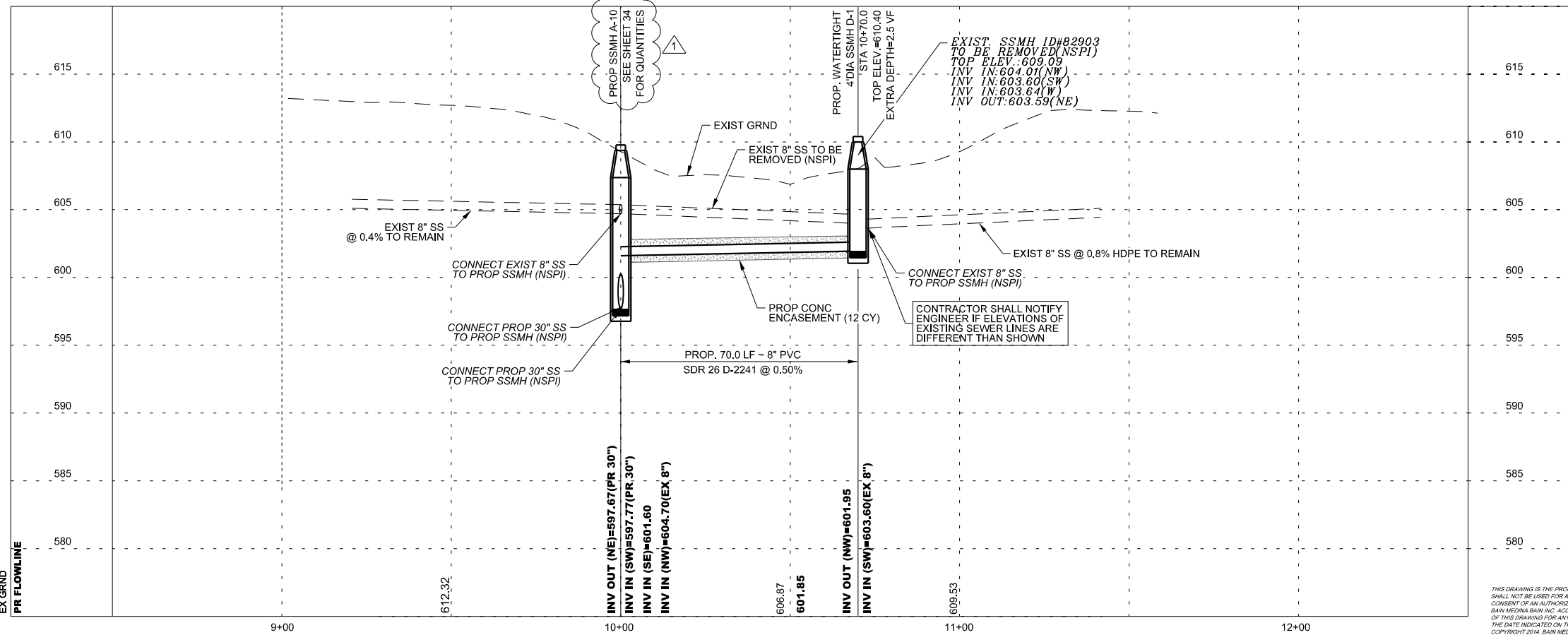


**LEGEND**

- EXISTING WATER METER
- EXISTING FIRE HYDRANT
- EXISTING POWER POLE
- EXISTING WATER VALVE
- EXISTING MAIL BOX
- EXISTING TELECOMM BOX
- EXISTING FLOW ARROW
- PROP WATER MAIN
- EXIST WATER MAIN
- PROP SANITARY SEWER
- EXIST SANITARY SEWER
- ABANDON SEWER LINE
- PROPOSED SEWER MANHOLE
- EXIST SEWER MANHOLE
- PROPOSED SEWER LATERAL AND CLEAN-OUT
- GAS MAIN
- OVERHEAD ELECTRIC
- UNDERGROUND ELECTRIC
- UNDERGROUND TELEPHONE
- PROPOSED FLOW ARROWS
- TREE
- SIGN
- GUY ANCHOR
- BOREHOLE
- CONTROL POINT
- FLOWABLE FILL/CONC
- CUT & REPLACE ASPHALT/CONCRETE
- MILL & OVERLAY
- CAUTION UTILITY CROSSING



The seal appearing on this document was authorized by  
**CARL BAIN**  
 P.E. 56996 ON  
 4/21/2021



THIS DRAWING IS THE PROPERTY OF BAIN MEDINA BAIN, INC. AND SHALL NOT BE USED FOR ANY PURPOSE WITHOUT THE WRITTEN CONSENT OF AN AUTHORIZED AGENT OF BAIN MEDINA BAIN, INC. BAIN MEDINA BAIN, INC. ACCEPTS NO RESPONSIBILITY FOR THE USE OF THIS DRAWING FOR ANY PURPOSE AFTER SIX MONTHS FROM THE DATE INDICATED ON THE DRAWING. ALL RIGHTS RESERVED. COPYRIGHT 2014, BAIN MEDINA BAIN, INC.

REV.	DATE	DESCRIPTION	BY
1	4/21/2021	ADDENDUM #01	CB

**BAIN MEDINA BAIN, INC.**  
 ENGINEERS & SURVEYORS  
 7073 San Pedro, San Antonio, Texas, 78216  
 Phone: 210-494-7223 Fax: 210-490-5120 WWW.BMBl.COM

C-69 SOUTH ZARZAMORA

**SANITARY SEWER LINE "D"**  
 PLAN & PROFILE

DEVELOPER: \_\_\_\_\_  
 CONT. \_\_\_\_\_ BUDGET PROJ. \_\_\_\_\_

SUBMITTED \_\_\_\_\_  
 APPROVED \_\_\_\_\_

MAP No. \_\_\_\_\_ SHEET 40 OF 56  
 SECT. No. \_\_\_\_\_ 100% DESIGN  
 DR. MG CK. CC/CB JOB No. 18-4506